



PROPOSED SMALL CELL NODE UPGRADE

NODE ID: ODAS_2F-22
T-MOBILE ID: NE0403BA_41LAB
SCU#: 406462
 290 EASTERN AVE, MALDEN, MA 02148
 MIDDLESEX COUNTY

LATITUDE: 42.427091°
N 42° 25' 37.5"
LONGITUDE: -71.060592°
W 71° 03' 38.1"



Know what's below.
Call before you dig.

ENGINEERING FIRM



APPLICANT



SITE INFORMATION

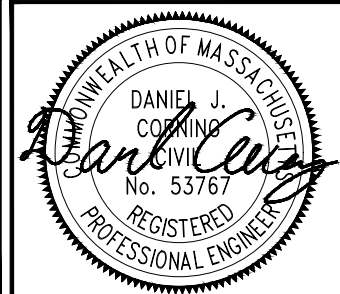
ODAS_2F-22
290 EASTERN AVE
MALDEN, MA 02148
MIDDLESEX COUNTY

DESIGN RECORD

REVISIONS

REV	DATE	DESCRIPTION	BY
0	11/15/23	FINAL	CM

PROFESSIONAL STAMP



ENGINEER

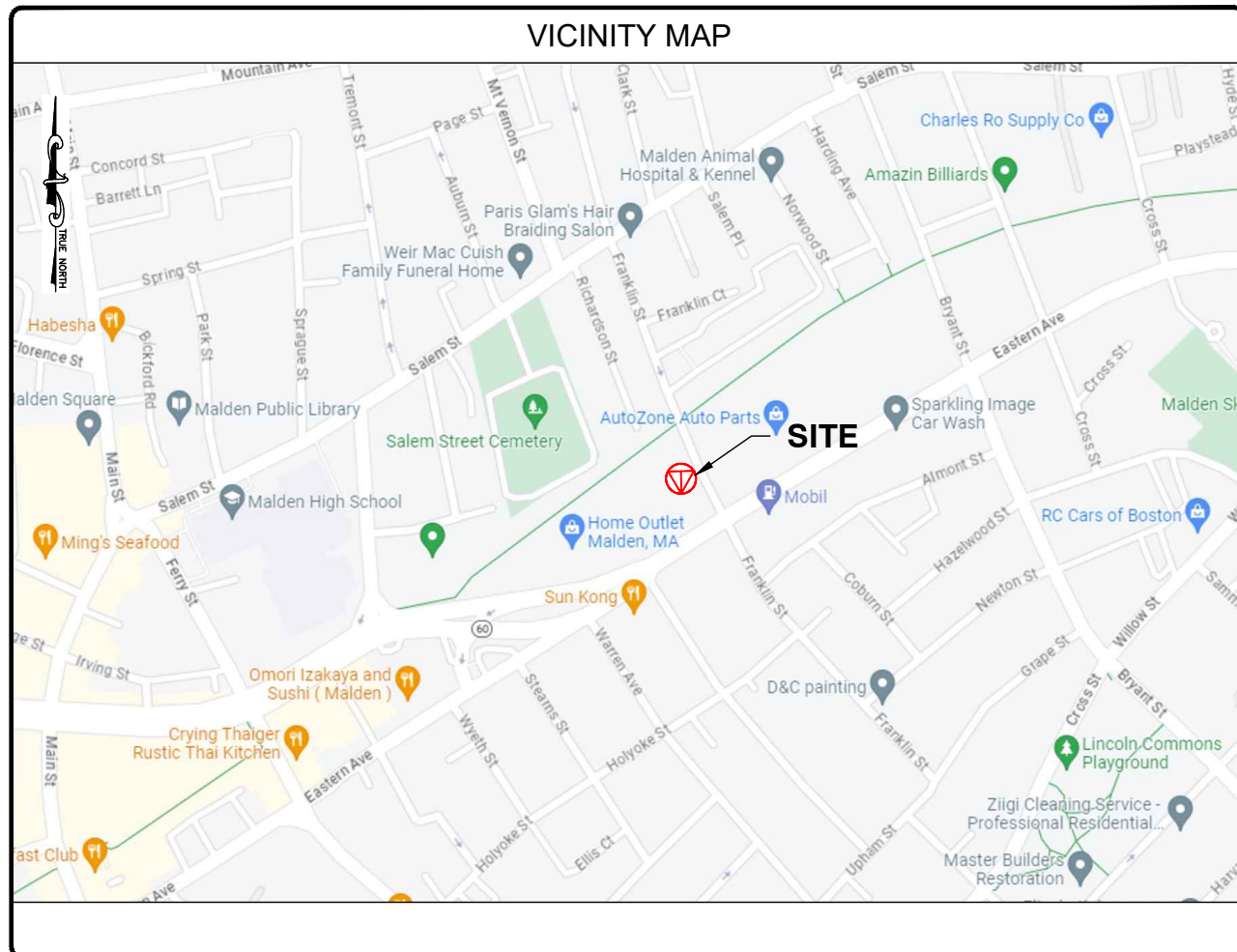
DANIEL J. CORNING, P.E.
 MA PROFESSIONAL ENGINEER LIC #53767

SHEET TITLE

TITLE SHEET

SHEET NUMBER

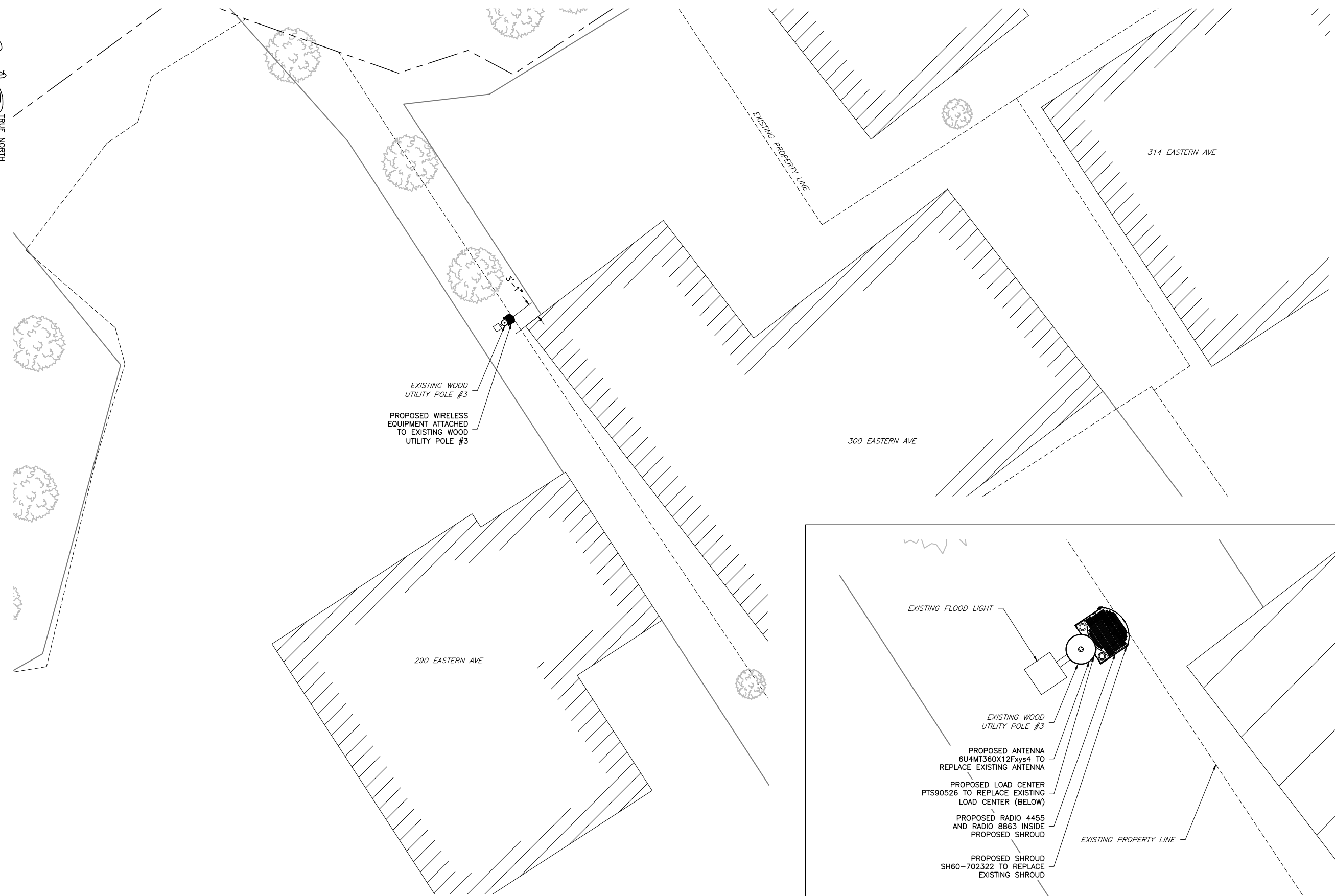
SHEET
01 OF 08



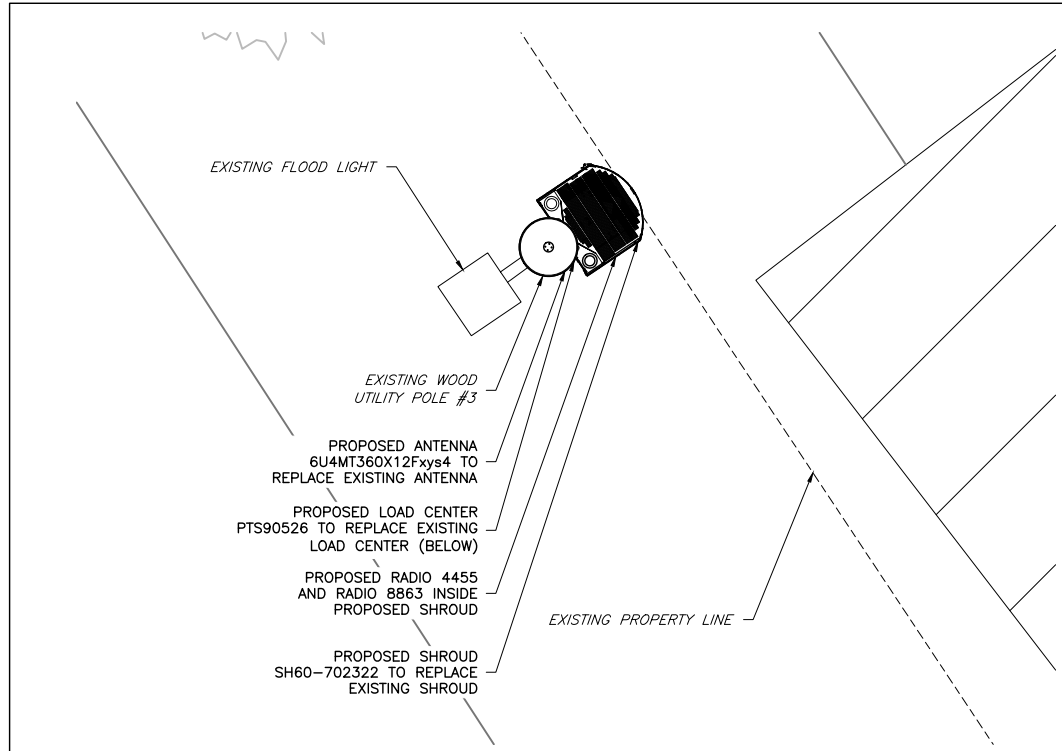
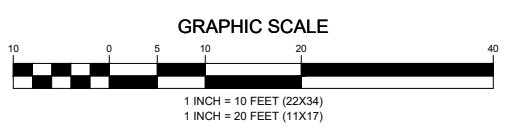
PROJECT INFORMATION	
PROJECT NAME:	EVERETT MA TID 00038_39 NODES
JURISDICTION:	MALDEN
CROWN CASTLE PROJECT MANAGER:	JOHN KROGUL 1800 W PARK DRIVE WESTBOROUGH, MA 01581 (508) 621-9145
ELECTRIC COMPANY:	EVERSOURCE
TELEPHONE COMPANY:	VERIZON

CODE COMPLIANCE	
ALL WORK AND MATERIALS SHALL BE PERFORMED AND INSTALLED IN ACCORDANCE WITH THE CURRENT EDITIONS OF THE FOLLOWING CODES AS ADOPTED BY THE LOCAL GOVERNING AUTHORITIES. NOTHING IN THESE PLANS IS TO BE CONSTRUED TO PERMIT WORK NOT CONFORMING TO THE LATEST EDITIONS OF THE FOLLOWING CODES.	
<ul style="list-style-type: none"> 2015 INTERNATIONAL BUILDING CODE (MASSACHUSETTS AMENDED 9TH EDITION) 2023 NATIONAL ELECTRICAL CODE NFPA 1-2015 EDITION 2015 IFC - REFERENCE 527 CMR AMERICAN CONCRETE INSTITUTE AMERICAN INSTITUTE OF STEEL CONSTRUCTION MANUAL OF STEEL CONSTRUCTION 13TH EDITION 	<ul style="list-style-type: none"> ANSI/TIA-222-G TIA 607 INSTITUTE FOR ELECTRICAL & ELECTRONICS ENGINEER 81 IEEE C2 NATIONAL ELECTRIC SAFETY CODE LATEST EDITION TELECORDIA GR-1275 ANSI/T 311

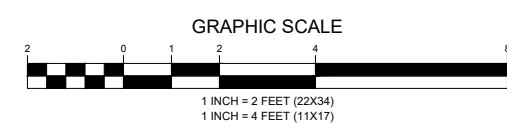
DRAWING INDEX	
01	TITLE SHEET
02	NOTES
03	SITE PLAN & EQUIPMENT ORIENTATION PLAN
04	ELEVATIONS & NOTES
05	PHOTO SIMULATION
06	ANTENNA & EQUIPMENT DETAILS
07	GROUNDING DETAILS & WIRING DIAGRAM
08	TRAFFIC MANAGEMENT PLAN



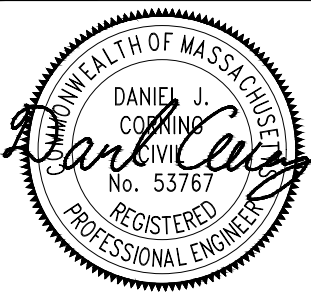


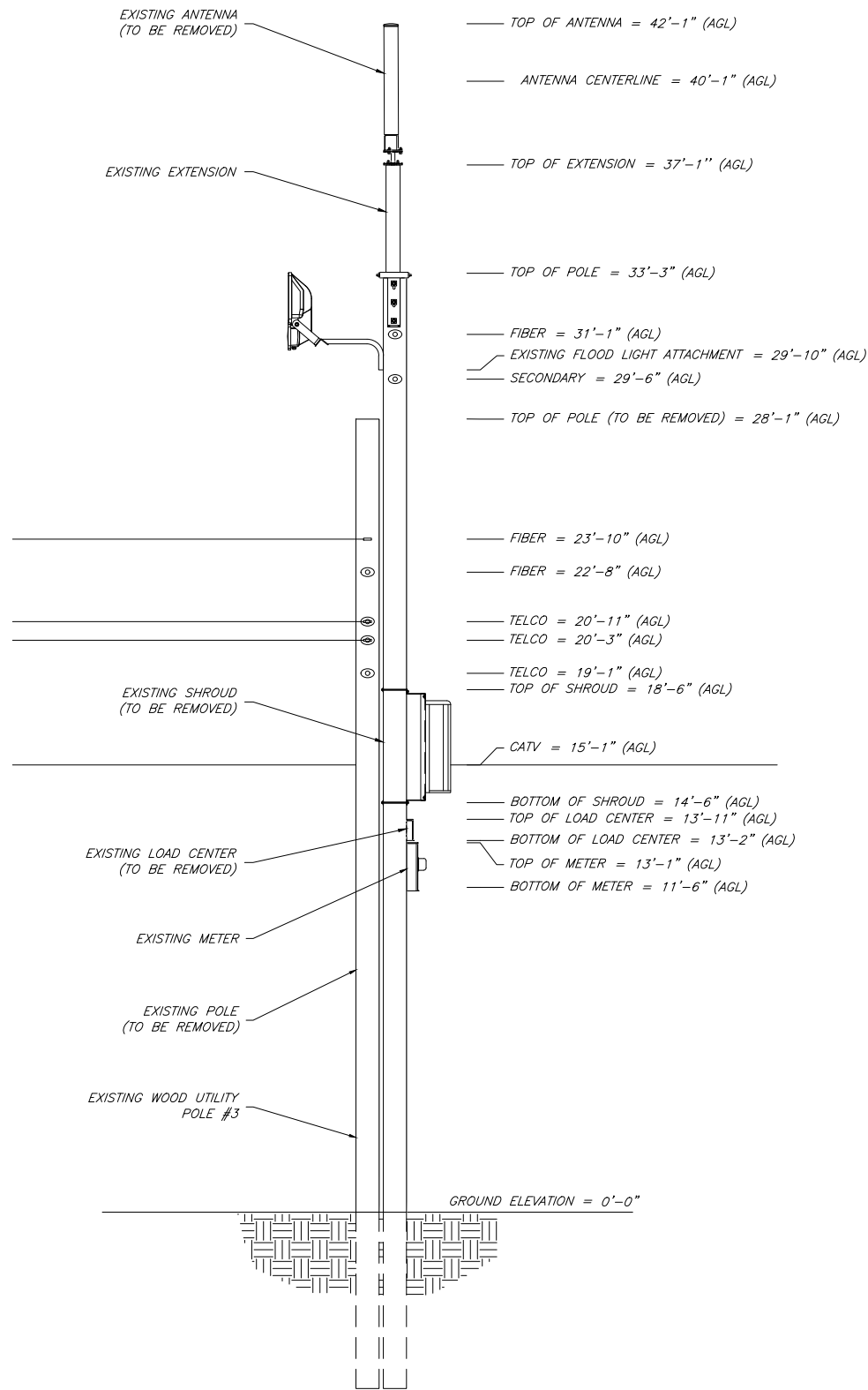
SITE PLAN



EQUIPMENT ORIENTATION PLAN

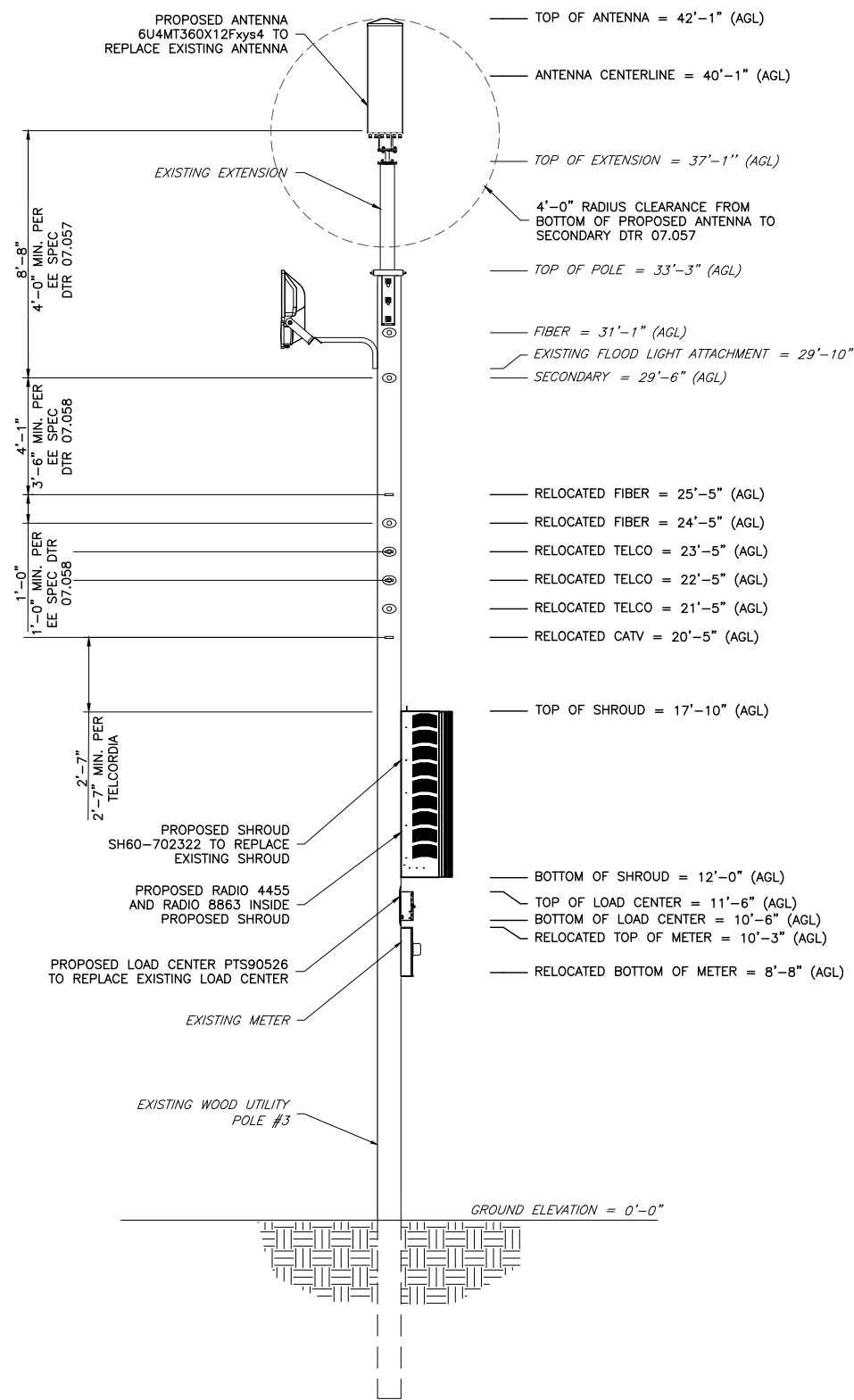
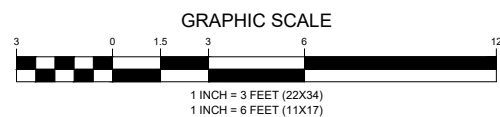


ENGINEERING FIRM	 TOTALLY COMMITTED. <small>NB+C ENGINEERING SERVICES, LLC. 100 APOLLO DRIVE, SUITE 303 CHELMSFORD, MA 01824 (978) 556-5308</small>												
APPLICANT	 CROWN CASTLE <small>CROWN CASTLE FIBER, LLC 1800 W PARK DRIVE WESTBOROUGH, MA 01581 (508) 621-9144</small>												
SITE INFORMATION	<p>ODAS_2F-22 290 EASTERN AVE MALDEN, MA 02148 MIDDLESEX COUNTY</p>												
DESIGN RECORD	<table border="1" style="width: 100%; border-collapse: collapse;"> <thead> <tr> <th colspan="4" style="text-align: center;">REVISIONS</th> </tr> <tr> <th style="width: 10%;">REV</th> <th style="width: 15%;">DATE</th> <th style="width: 65%;">DESCRIPTION</th> <th style="width: 10%;">BY</th> </tr> </thead> <tbody> <tr> <td style="text-align: center;">0</td> <td style="text-align: center;">11/15/23</td> <td style="text-align: center;">FINAL</td> <td style="text-align: center;">CM</td> </tr> </tbody> </table>	REVISIONS				REV	DATE	DESCRIPTION	BY	0	11/15/23	FINAL	CM
REVISIONS													
REV	DATE	DESCRIPTION	BY										
0	11/15/23	FINAL	CM										
PROFESSIONAL STAMP													
ENGINEER	<p>DANIEL J. CORNING, P.E. MA PROFESSIONAL ENGINEER LIC #53767</p>												
SHEET TITLE	<p>SITE PLAN & EQUIPMENT ORIENTATION PLAN</p>												
SHEET NUMBER	<p>SHEET 03 OF 08</p>												

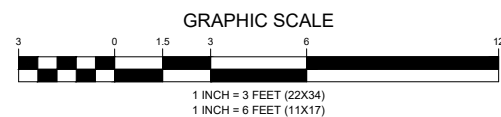


EXISTING DOUBLE WOOD POLE SHOULD HAVE AN EXISTING NJUNS. FOLLOW UP WITH EVERSOURCE NEEDED PENDING TRANSFER.

EXISTING ELEVATION (LOOKING NORTHWEST)



PROPOSED ELEVATION (LOOKING NORTHWEST)



NOTES:

- EQUIPMENT ELEVATION IS SUBJECT TO MAKE READY PERFORMED BY POLE OWNER.
- NEW PLACARD SHALL BE OSHA COMPLIANT AND DISPLAY THE FOLLOWING INFORMATION: TRANSMITTING SYSTEM, EQUIPMENT OWNER & PROPER CONTACT INFORMATION. INSTALL PER UTILITY COMPANY REQUIREMENTS AND VERIFY EXACT MOUNTING HEIGHT IN FIELD.
- MAINTAIN MINIMUM OF 42" FROM TOP COMMUNICATION ATTACHMENT TO BOTTOM SECONDARY POWER CONNECTION.
- MAINTAIN MINIMUM OF 48" CLEARANCE IN ANY DIRECTION FROM ANTENNA AND MOUNTING BRACKET TO NEAREST SECONDARY POWER CONNECTION.
- MAINTAIN MINIMUM OF 12" FROM TOP COMMUNICATIONS LINE TO ANY ADDITIONAL COMMUNICATIONS LINE.
- MAINTAIN MINIMUM OF 5' FROM GROUND LEVEL TO CENTER OF METER SOCKET.
- MAINTAIN MINIMUM OF 6' CLEARANCE IN ANY DIRECTION FROM ANTENNA AND MOUNTING BRACKET TO NEAREST PRIMARY POWER CONNECTION.
- MAINTAIN MINIMUM OF 2'-7" FROM LOWEST COMMUNICATION CABLE TO TOP OF SHROUD.
- EQUIPMENT TO BE INSTALLED ON OPPOSITE SIDE OF TRAFFIC FLOW.
- POWER SUPPLY & WEATHERHEAD SHOULD BE INSTALLED ON THE SAME SIDE OF THE POLE WITH THE SECONDARY(S) AND COMMUNICATION CABLE(S) TO ACCOMMODATE CLIMBING OF THE POLE.
- PRIOR TO THE INSTALLATION OF THE PROPOSED EQUIPMENT OR MODIFICATION TO THE EXISTING STRUCTURE, CONTRACTOR SHALL REFER TO THE LATEST STRUCTURAL ANALYSIS COMPLETED BY: NETWORK BUILDING + CONSULTING, LLC.

ENGINEERING FIRM



APPLICANT



SITE INFORMATION

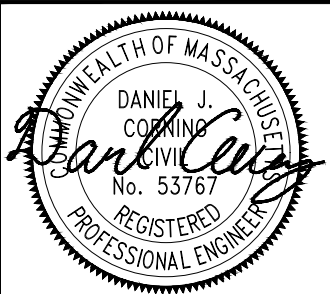
ODAS_2F-22
290 EASTERN AVE
MALDEN, MA 02148
MIDDLESEX COUNTY

DESIGN RECORD

REVISIONS

REV	DATE	DESCRIPTION	BY
0	11/15/23	FINAL	CM

PROFESSIONAL STAMP



ENGINEER

DANIEL J. CORNING, P.E.
MA PROFESSIONAL ENGINEER LIC #53767

SHEET TITLE

ELEVATIONS
& NOTES

SHEET NUMBER

SHEET
04 OF 08



EXISTING CONDITIONS



PROPOSED CONDITIONS

ENGINEERING FIRM

NB+C
TOTALLY COMMITTED.
NB+C ENGINEERING SERVICES, LLC.
100 APOLLO DRIVE, SUITE 303
CHELMSFORD, MA 01824
(978) 556-5308

APPLICANT

CROWN CASTLE
CROWN CASTLE FIBER, LLC
1800 W PARK DRIVE
WESTBOROUGH, MA 01581
(508) 621-9144

SITE INFORMATION

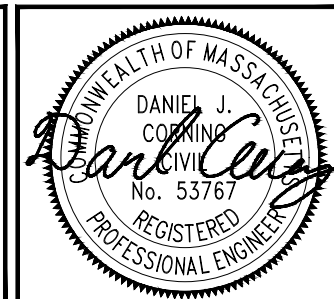
ODAS_2F-22
290 EASTERN AVE
MALDEN, MA 02148
MIDDLESEX COUNTY

DESIGN RECORD

REVISIONS

REV	DATE	DESCRIPTION	BY
0	11/15/23	FINAL	CM

PROFESSIONAL STAMP



ENGINEER

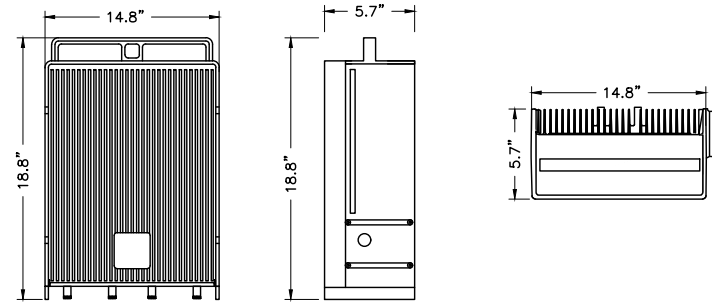
DANIEL J. CORNING, P.E.
MA PROFESSIONAL ENGINEER LIC #53767

SHEET TITLE

PHOTO
SIMULATION

SHEET NUMBER

SHEET
05 OF 08

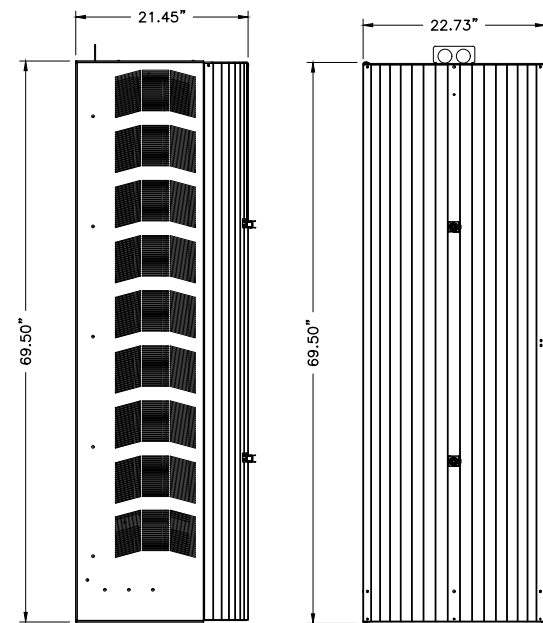
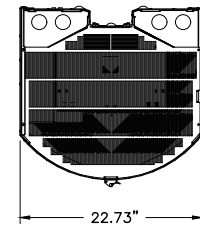


SIZE AND WEIGHT TABLE

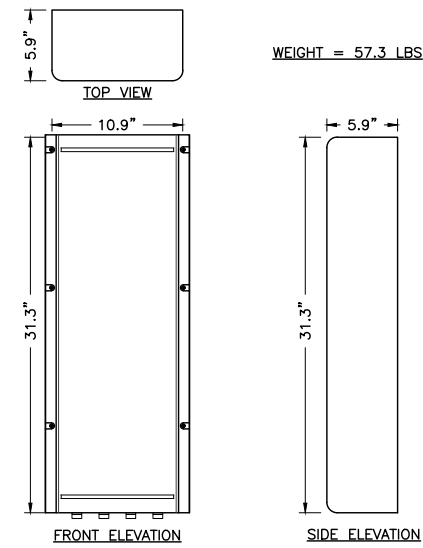
RRU	HEIGHT	WIDTH	DEPTH	WEIGHT (W/FAN UNIT)
RADIO 8863 B41	18.8"	14.8"	5.7"	50.9 LBS.

1 ERICSSON REMOTE RADIO UNIT (RRU)
06 NTS

CHARLES INDUSTRIES INC. SHROUD
PART NO. COLO-702322
HEIGHT: 69.50 IN
WIDTH: 22.73 IN
DEPTH: 21.45 IN



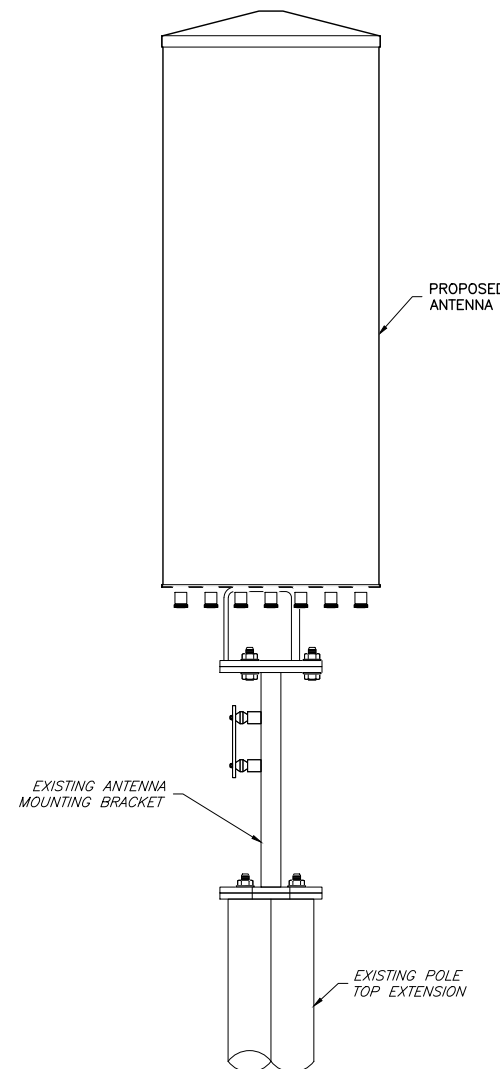
4 SHROUD DETAIL
06 NTS



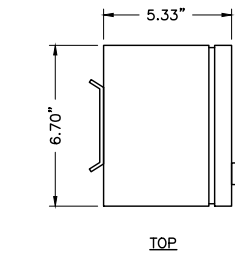
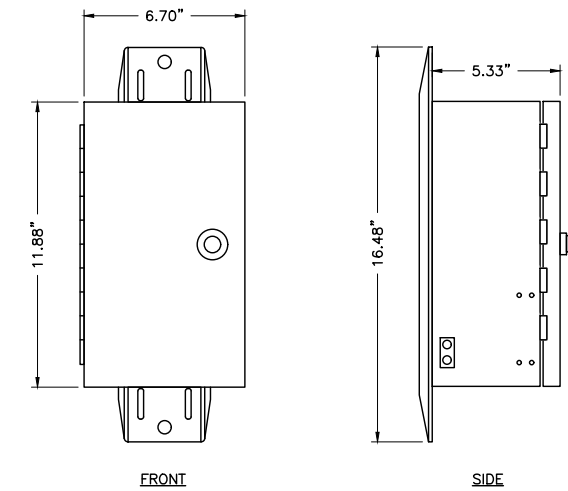
SIZE AND WEIGHT TABLE

RRH	WIDTH	DEPTH	HEIGHT	WEIGHT
RADIO 4455 B2/B25	10.9"	5.9"	31.3"	57.3 LBS

2 RADIO 4455 DETAIL
06 NTS

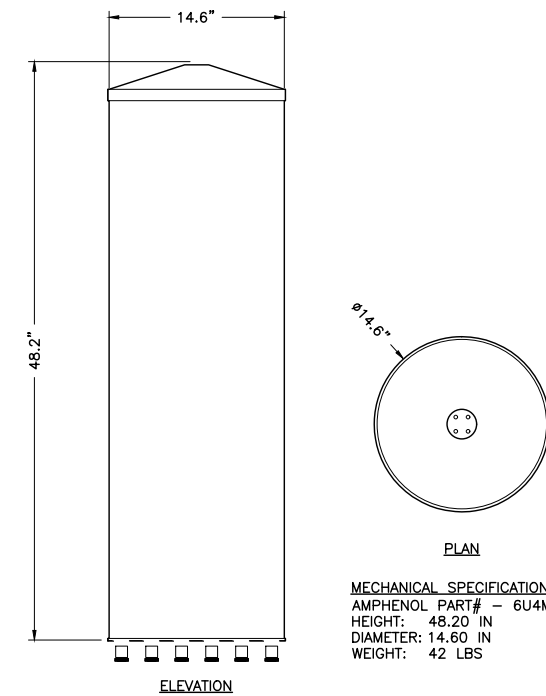


5 ANTENNA MOUNTING DETAIL
06 NTS



PTS_AC DISTRIBUTION PANEL:
PART NO. PTS90526

3 AC LOAD CENTER DETAIL
06 NTS



MECHANICAL SPECIFICATIONS
AMPHENOL PART# - 6U4MT360X12Fxs0
HEIGHT: 48.20 IN
DIAMETER: 14.60 IN
WEIGHT: 42 LBS

6 ANTENNA DETAIL
06 NTS

ENGINEERING FIRM

NB+C
TOTALLY COMMITTED.
NB+C ENGINEERING SERVICES, LLC.
100 APOLLO DRIVE, SUITE 303
CHELMSFORD, MA 01824
(978) 556-5308

APPLICANT

CROWN CASTLE
CROWN CASTLE FIBER, LLC
1800 W PARK DRIVE
WESTBOROUGH, MA 01581
(508) 621-9144

SITE INFORMATION

ODAS_2F-22
290 EASTERN AVE
MALDEN, MA 02148
MIDDLESEX COUNTY

DESIGN RECORD

REVISIONS

REV	DATE	DESCRIPTION	BY
0	11/15/23	FINAL	CM

PROFESSIONAL STAMP



ENGINEER

DANIEL J. CORNING, P.E.
MA PROFESSIONAL ENGINEER LIC #53767

SHEET TITLE

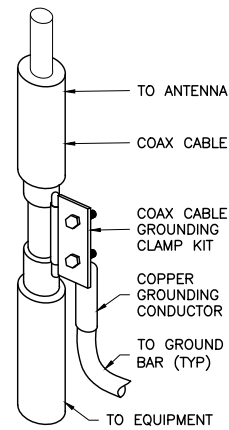
ANTENNA & EQUIPMENT DETAILS

SHEET NUMBER

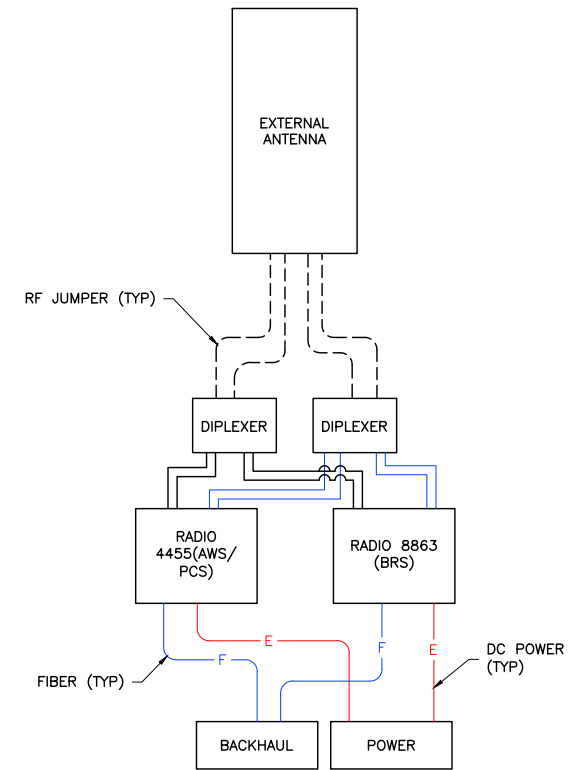
SHEET
06 OF 08

GENERAL NOTES:

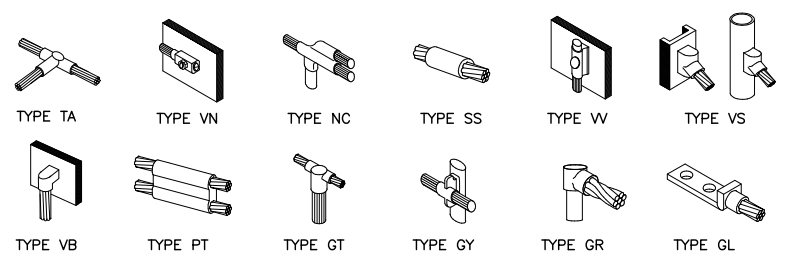
- METAL TO METAL CONTACT IS NOT ALLOWED WITHOUT AN INTENTIONAL BOND.
- DISSIMILAR METALS IN DIRECT CONTACT, CAUSE CHEMICAL REACTION BETWEEN THE METALS, LEADING TO CORROSION.
- ALL ABOVE GROUND CONNECTIONS TO THE VERTICAL GROUND RISER (VGR) SHALL BE IRREVERSIBLE CLAMP TYPE AND WEATHER PROOFED.
- WHERE APPLICABLE EARTH GROUND RESISTANCE OF 5 OHMS OR LESS IS PREFERRED. 25 OHMS IS ACCEPTABLE SEE NEC 250.53.
- ALL METALLIC SURFACES AND/OR GROUND COMPONENTS INSTALLED W/IN 6" OF EACH OTHER MUST BE PROPERLY BONDED TO VGR, INCLUDING BUT NOT LIMITED TO, RADIO SHROUD, ANTENNA BRACKETS, STREET LIGHTS AND THE METER/LOAD CENTER OF THE AC SERVICE.
- RF GROUND KITS ARE NOT REQUIRED WHERE RF SURGE PROTECTION DEVICES (SPDS) ARE INSTALLED AHEAD OF THE RF CABLES ENTRY POINT INTO THE SHROUD. GROUND AVAILABLE SPDS TO VGR.
- WHEN A NEW FOUNDATION IS INSTALLED, BOND THE AVAILABLE REBAR TO THE SITE GROUNDING.
- WHEN GROUNDING EQUIPMENT INSIDE A SHROUD, CONNECT TO THE SHROUD MANUFACTURER'S GROUND BUSS BAR, AND WATERFALL THE GROUND WIRE FROM THE SHROUD IN A DOWNWARD SWEEPING MOTION TO THE VGR. AVOID GROUND LOOPS THROUGH THE EQUIPMENT CHASSIS TO THE METALLIC SHROUD.
- FOR METAL POLES BOND THE POLE TO THE VGR. FOR ELECTRIC METERS INSTALLED ON METAL POLES, AVOID UNINTENTIONAL BONDING THROUGH THE CHASSIS OF THE METER AND THE METAL POLE. ALL BONDS SHOULD BE INTENTIONAL.
- THE NEUTRAL GROUND BOND SHOULD IDEALLY BE AT THE FIRST LOAD CENTERING MEANS AFTER THE ELECTRICAL SERVICE. SEE NEC CODE 250.24 FOR NEUTRAL GROUND BONDING CONNECTION.
- WHEN SITE IS POWERED UP, BEFORE ACCEPTANCE, TEST FOR OBJECTIONABLE CURRENT AND FOREIGN VOLTAGE.



1 COAX CABLE GROUNDING
07 NTS



3 WIRING DIAGRAM
07 NTS



2 GROUNDING CONNECTION DETAILS
07 NTS

ENGINEERING FIRM

NB+C
TOTALLY COMMITTED.

NB+C ENGINEERING SERVICES, LLC.
100 APOLLO DRIVE, SUITE 303
CHELMSFORD, MA 01824
(978) 556-5308

APPLICANT

CROWN CASTLE

CROWN CASTLE FIBER, LLC
1800 W PARK DRIVE
WESTBOROUGH, MA 01581
(508) 621-9144

SITE INFORMATION

ODAS_2F-22
290 EASTERN AVE
MALDEN, MA 02148
MIDDLESEX COUNTY

DESIGN RECORD

REVISIONS			
REV	DATE	DESCRIPTION	BY
0	11/15/23	FINAL	CM

PROFESSIONAL STAMP

ENGINEER

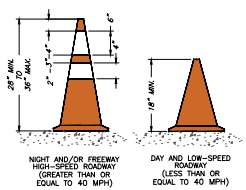
DANIEL J. CORNING, P.E.
MA PROFESSIONAL ENGINEER LIC #53767

SHEET TITLE

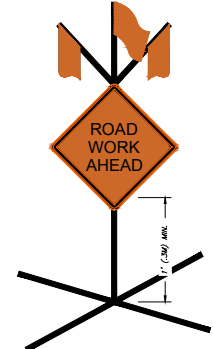
**GROUNDING
DETAILS &
WIRING DIAGRAM**

SHEET NUMBER

SHEET
07 OF 08



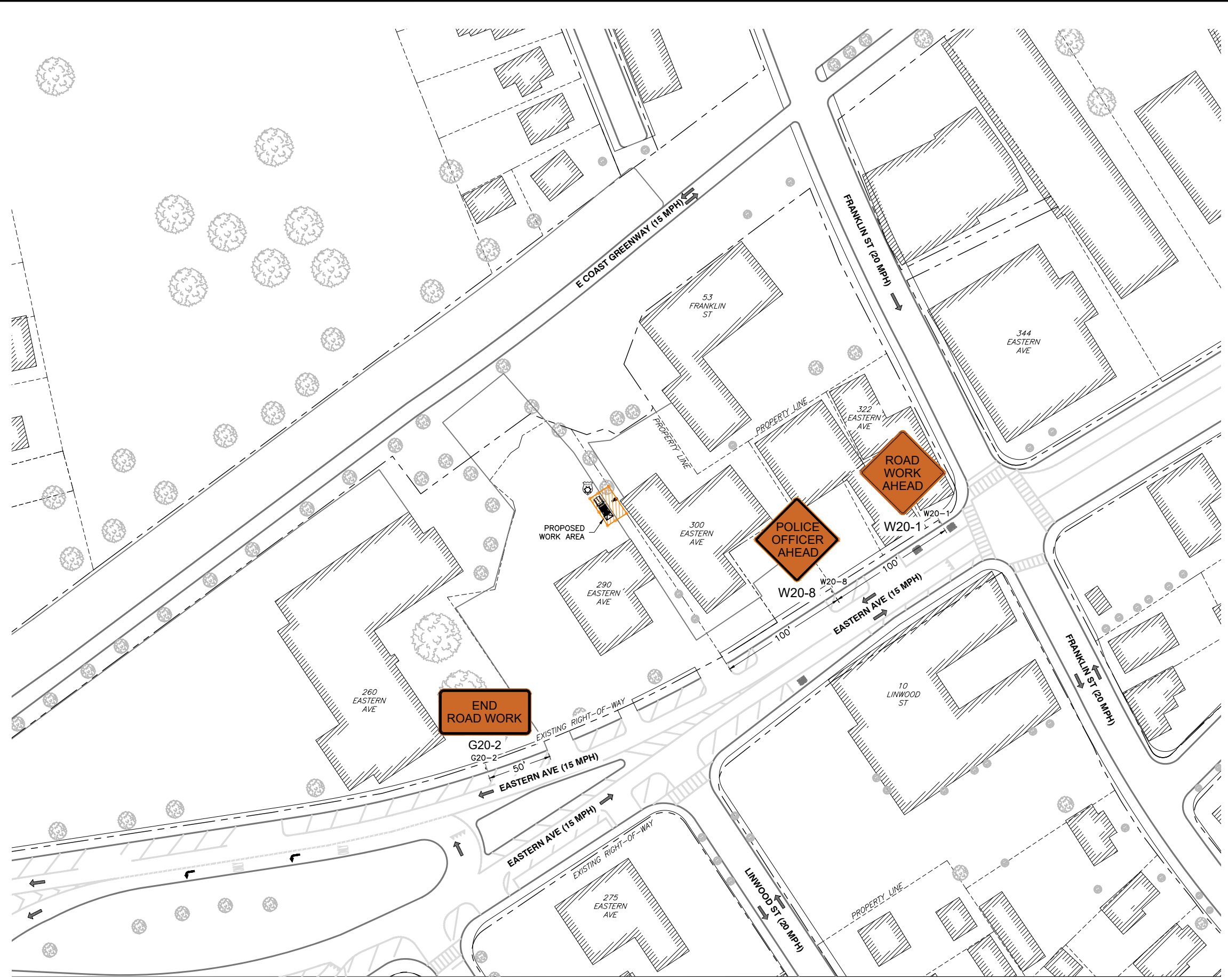
CHANNELIZING DEVICES - CONES (NTS)



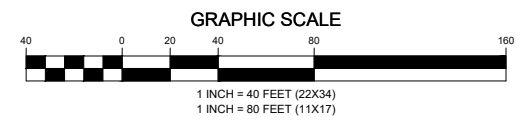
FREE STANDING SELF SUPPORT SIGN (TYP.) (NTS)

NOTE: ALL WORK SIGNAGE TO BE MOUNTED ON SELF SUPPORTING STANDS OR BE ATTACHED TO EXISTING FIXTURES.

TRAFFIC LEGEND	
	FLAGGER
	WORK ZONE
	PROPOSED TRENCH
	CHANNELIZING DEVICE (CONE)
	DRUM
	SIGN
	POLICE DETAIL
	SINGLE PARKING METER
	DOUBLE PARKING METER
	VARIABLE MESSAGE BOARD
	ARROW BOARD
	TYPE 3 BARRICADE
	HIGH LEVEL WARNING DEVICE
	CONSTRUCTION VEHICLE
	TRUCK MOUNTED ATTENUATOR
	PEDESTRIAN TRAFFIC FLOW
	VEHICLE TRAFFIC FLOW
	2 WAY TRAFFIC
	EXISTING MBTA BUS STOP
	RELOCATED MBTA BUS STOP



TRAFFIC MANAGEMENT PLAN



ENGINEERING FIRM

NB+C
TOTALLY COMMITTED.

NB+C ENGINEERING SERVICES, LLC.
100 APOLLO DRIVE, SUITE 303
CHELMSFORD, MA 01824
(978) 556-5308

APPLICANT

CROWN CASTLE

CROWN CASTLE FIBER, LLC
1800 W PARK DRIVE
WESTBOROUGH, MA 01581
(508) 621-9144

SITE INFORMATION

ODAS_2F-22
290 EASTERN AVE
MALDEN, MA 02148
MIDDLESEX COUNTY

DESIGN RECORD

REVISIONS			
REV	DATE	DESCRIPTION	BY
0	11/15/23	FINAL	CM

PROFESSIONAL STAMP

ENGINEER

DANIEL J. CORNING, P.E.
MA PROFESSIONAL ENGINEER LIC #53767

SHEET TITLE

TRAFFIC MANAGEMENT PLAN

SHEET NUMBER

SHEET
08 OF 08