



December 3, 2025

Stephen Winslow, President  
Malden City Council  
215 Pleasant Street  
Malden, MA 02148

**Re: Revere-Malden Improvements at Route 1 Northbound Project  
MassDOT Project #610543**

Dear Mr. Winslow and the City Council:

The Massachusetts Department of Transportation (MassDOT) Highway Division proposes roadway improvements at Route 1 Northbound over the Pines River in Revere and Malden, MA (the Project). The Project proposes to improve traffic operations and safety by widening the roadway, lane and shoulder reconfiguration, and installation of a new right lane. The Project description below is included for the City Council's review.

The Revere-Malden Route 1 Northbound Improvement Project (the Project) includes roadway, structural and traffic improvements to U.S. Route 1 Northbound from the Copeland Circle U.S. Route 1 Northbound on-ramp in Revere to the beginning of the existing U.S. Route 1 Northbound climbing lane located just north of the Salem Street U.S. Route 1 Northbound on-ramp in Malden. The Project will improve traffic operations and safety in this section of the U.S. Route 1 Northbound corridor, which currently experiences significant traffic congestion and travel delays. The project includes minor roadway widening, lane and shoulder reconfiguration, and the addition of a new right lane auxiliary lane, which will extend from the U.S. Route 1 Northbound from the Copeland Circle U.S. Route 1 Northbound on-ramp in Revere to the Lynn Street off-ramp in Revere. The total Project length is approximately 0.5 miles.

The Project also includes the partial ramp reconstruction at the Lynn Street Northbound off-ramp in Revere. The existing off-ramp is geometrically substandard. The ramp improvements will provide improved vertical and horizontal geometry including a slightly larger ramp curve radius and superelevation. The ramp improvements will also include slope protection measures on its east embankment in order to reduce impact to adjacent resource areas and to avoid floodplain impacts. The Project also includes structural bridge railing modifications to the northbound east side bridge railings to Bridge No. R-05-002 in Revere and Bridge No. R-05-022=M-01-008 in Revere and Malden.

In addition, the Project will include pavement milling, installation of new pavement, removal of existing highway guard, installation of new highway guard, removing and resetting (or replacement) of curbing and edging, full-depth box widening, excavation, minor drainage improvements, embankment landscaping, modification and/or replacement of overhead guide signs, installation of traffic and regulatory signs, provision of safety controls and signing for construction operations, and other incidental items included in the contract documents.

MassDOT Highway Division requests that the City Council reviews the enclosed materials at their earliest convenience and provides any comments that the City Council wishes to make regarding this project. Written comments should be submitted, preferably within 30 days, to: Carrie Lavallee, P.E., Chief Engineer, MassDOT Highway Division, 10 Park Plaza, Boston, MA 02116, Attn: Lawrence Cash at [lawrence.cash@state.ma.us](mailto:lawrence.cash@state.ma.us). Please also copy the BETA Group, Inc. Attn: Dan McCormack at [dmccormack@beta-inc.com](mailto:dmccormack@beta-inc.com) or the address below.

**BETA GROUP, INC.**

315 Norwood Park South, 2<sup>nd</sup> Floor, Norwood, MA 02062  
P: 781.255.1982 | F: 781.255.1974 | W: [www.BETA-Inc.com](http://www.BETA-Inc.com)

If we can be of any further assistance regarding this matter, please contact us at our office.

Very truly yours,  
BETA Group, Inc.



Daniel McCormack, P.E.  
Senior Associate

Attachments:

Figure 1 – Location Map

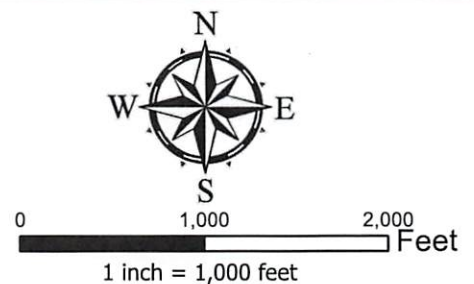
Figure 2 – General Plan

cc: L. Cash, MassDOT (w/o att)





**Figure 1**  
**Site Locus**  
**Route 1 North Improvements**  
**Revere, MA & Malden, MA**



Data Source: USGS Topographic Map (1982-1990)



REVERE & MALDEN ROUTE 1 (NORTH)			
STATE	FED AID PROJ. NO.	SHEET NO.	TOTAL SHEETS
MA		19	53
PROJECT FILE NO. 610543		CONSTRUCTION PLAN	

VINING STREET

SALEM STREET

FRANK P. BENNETT HIGHWAY  
(ROUTE C-1 / A.K.A. ROUTE 1)

SALEM STREET



CONTINUED ON  
SHEET NO. 20



FIG. 10-100-100-110  
APPROPRIATE FOR THE  
PLAN IN THIS PROJECT  
(1) OVERLAP (2) 10' (3) 20' (4) 30'

REVERE & MALDEN ROUTE 1 (NORTH)			
STATE	FED. AID PROJ. NO.	SHEET NO.	TOTAL SHEETS
MA		20	53
PROJECT FILE NO.		610543	

CONSTRUCTION PLAN

SALEM STREET

LYNN STREET

FRANK P. BENNETT HIGHWAY  
(ROUTE C-1 / A.K.A. ROUTE 1)

SALEM STREET

LYNN STREET

CONTINUED ON  
SHEET NO. 19

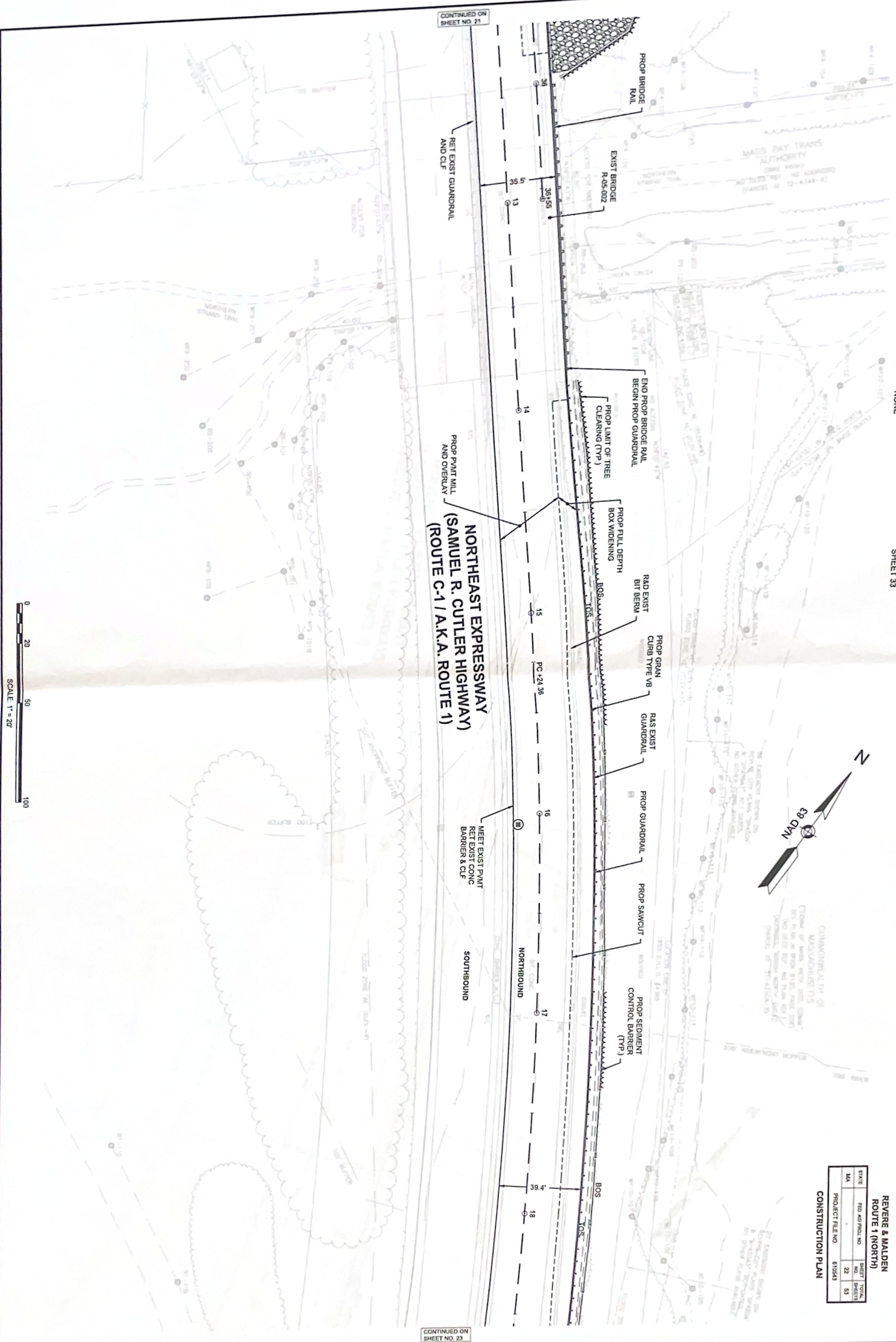
CONTINUED ON  
SHEET NO. 21











CONTINUED ON SHEET NO. 21

NORTHEAST EXPRESSWAY  
(SAMUEL R. CUTLER HIGHWAY)  
(ROUTE C-1 / A.K.A. ROUTE 1)

SOUTHBOUND

NORTHBOUND

CONTINUED ON SHEET NO. 23

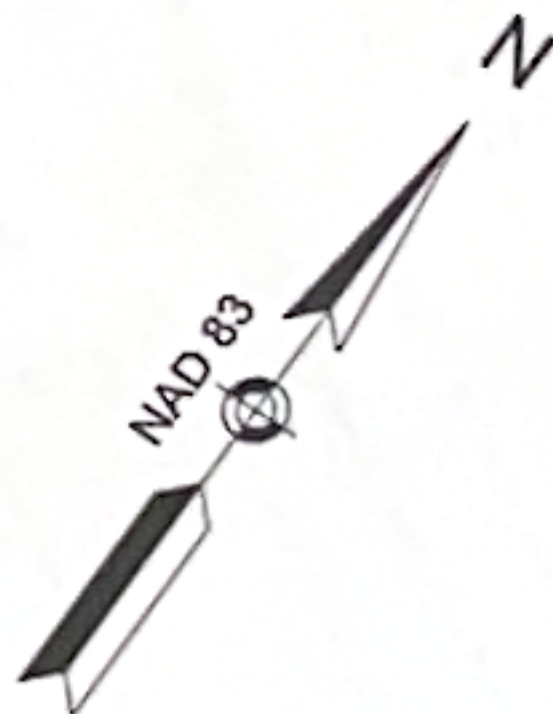
REVERE & MALDEN ROUTE 1 (NORTH)			
STATE	FED. AID PROJ. NO.	SHEET NO.	TOTAL SHEETS
MA		22	53
PROJECT FILE NO. 615543		CONSTRUCTION PLAN	





REVERE & MALDEN ROUTE 1 (NORTH)			
STATE	FED. AID PROJ. NO.	SHEET NO.	TOTAL SHEETS
MA		21	53
PROJECT FILE NO.		610543	

CONSTRUCTION PLAN



CONTINUED ON  
SHEET NO. 22

CONTINUED ON  
SHEET NO. 24

NORTHEAST EXPRESSWAY  
(SAMUEL R. CUTLER HIGHWAY)  
(ROUTE C-1/A.K.A. ROUTE 1)

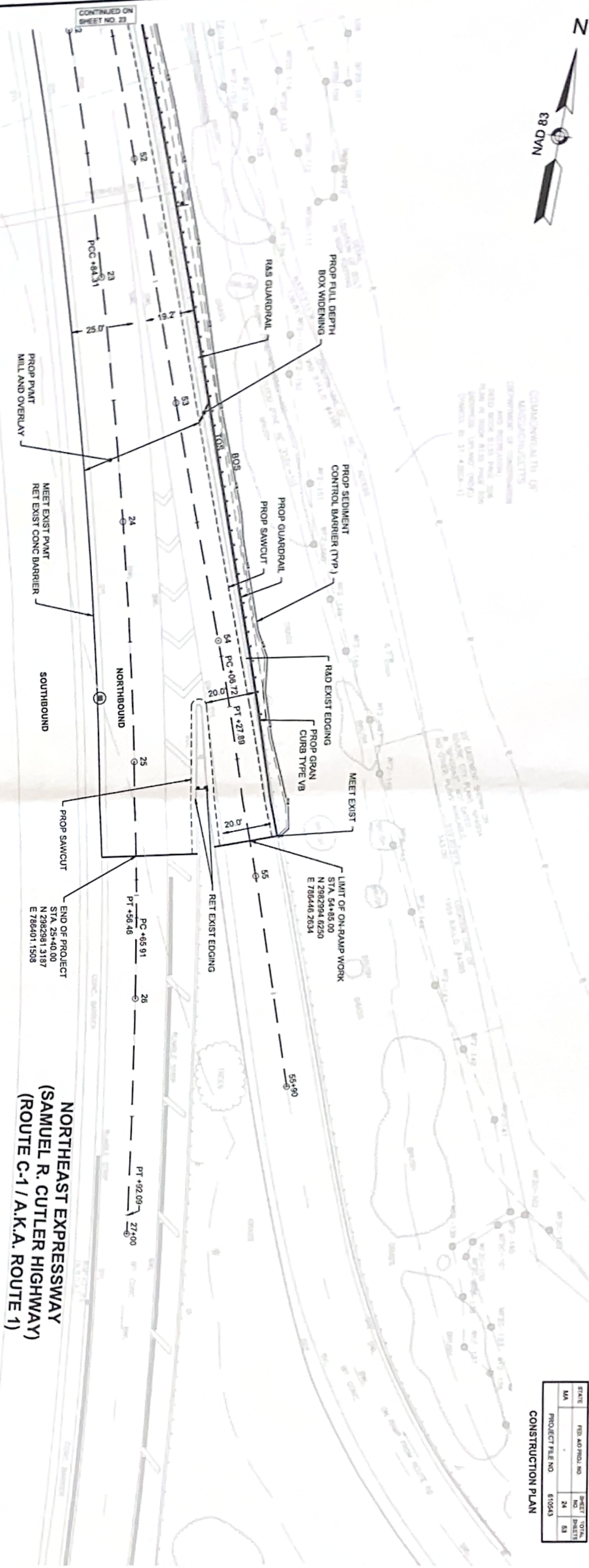


0 20 50 100  
SCALE: 1" = 20'





CONSTRUCTION OF  
MAINTENANCE  
AND REPAIRS  
TO THE  
ROADS OF THE  
STATE OF MASSACHUSETTS  
UNDER THE  
AUTHORITY OF  
CHAPTER 80B, § 11  
(STARS 80B-11)



REVERE & MALDEN ROUTE 1 (NORTH)			
STATE	FED AID PROJ. NO.	SHEET NO.	TOTAL SHEETS
MA		24	53
CONSTRUCTION PLAN			
PROJECT FILE NO.		810543	

