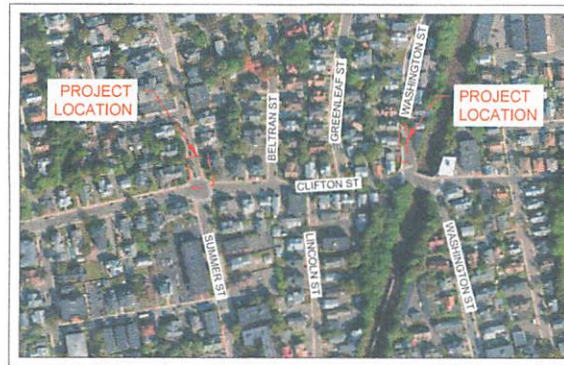


# nationalgrid

## 6" REGULATOR STATION REPLACEMENT 25 PSIG TO LP WASHINGTON ST @ CLIFTON ST, MALDEN, MA W.O. NO.: 9000220587 STATION 270



**LOCATION MAP**

LAT/LON: 42°25'56.47" N 71°04'20.47" W  
MALDEN, MA  
SCALE: 1:200

**INDEX OF SHEETS**

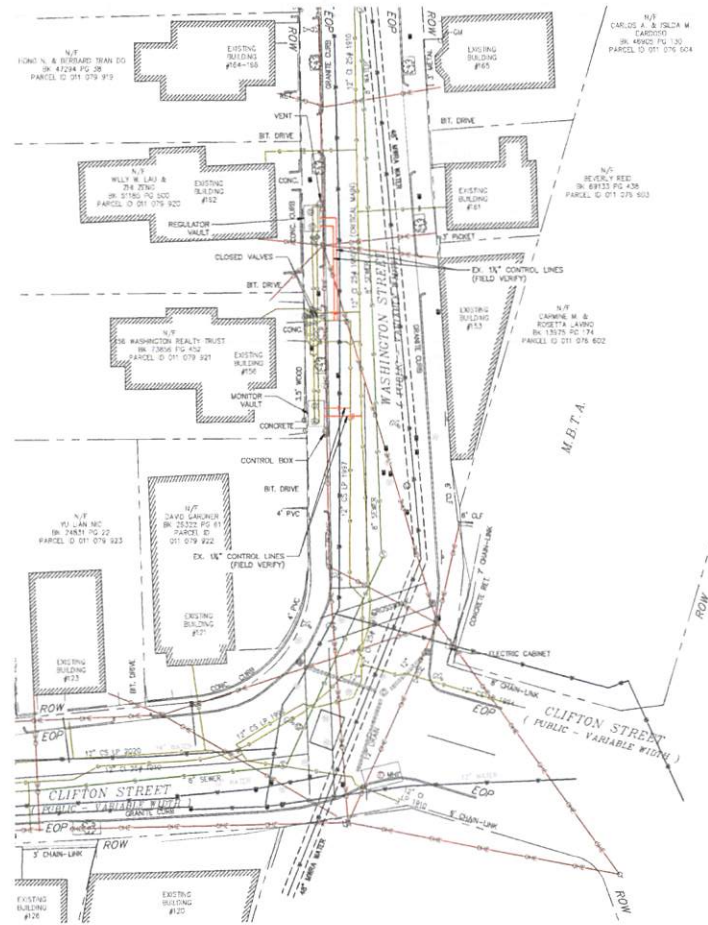
SHEET	NAME	TITLE
1	SR-MAL-9000220587 G-001	COVER - LOCATION MAP
2	SR-MAL-9000220587 G-002	CONSTRUCTION NOTES
3	SR-MAL-9000220587 G-003	CONSTRUCTION NOTES
4	SR-MAL-9000220587 C-001	EXISTING CONDITIONS
5	SR-MAL-9000220587 C-002	EXISTING CONDITIONS
6	SR-MAL-9000220587 C-003	ABANDONMENT
7	SR-MAL-9000220587 C-004	PROPOSED CONDITIONS
8	SR-MAL-9000220587 M-001	TIE-IN & ABANDONMENT DETAILS
9	SR-MAL-9000220587 M-002	TIE-IN & ABANDONMENT DETAILS
10	SR-MAL-9000220587 M-003	TIE-IN & ABANDONMENT DETAILS
11	SR-MAL-9000220587 M-004	DETAILS
12	SR-MAL-9000220587 M-005	DETAILS
13	SR-MAL-9000220587 X-001	BILL OF MATERIALS





 <p>43 HENDRIX ROAD WEST HENRIETTA, NY 14568 PHONE: (585) 634-7446 FAX: (585) 634-7547</p>	<p>BOSTON GAS COMPANY S/N/A</p> <p><b>nationalgrid</b></p> <p>40 SYLVAN ROAD MALDEN, MA 02148</p> <p><b>IFC</b></p>		<p>WASHINGTON STREET @ CLIFTON ST GRS GAS REGULATOR STATION REPLACEMENT WASHINGTON ST, CLIFTON ST, &amp; SUMMER ST MALDEN, MA</p> <p><b>COVER - LOCATION MAP</b></p>		<p>PAGE 01 OF 13</p> <p>DRAWING NO. SHEET NO.</p> <p><b>G-001 01</b></p>
	<p>71210158</p>		<p>DATE: 05/11/2021</p> <p>TIME: 10:00 AM</p> <p>SCALE: 1:200</p>	<p>DESIGNER: S. BRYDEN</p> <p>ENGINEER: S. BRYDEN</p> <p>DATE: 05/11/2021</p> <p>ASSET ID: 270</p> <p>W.O. NO.: 9000220587</p>	








  
 45 HENRY ROAD  
 WEST HENRIETTA, NY 14088  
 PHONE: 800.338.7847  
 FAX: 800.338.7447

BOSTON GAS COMPANY  
 7-21-18  

  
 40 STEVAN ROAD  
 WILMINGTON, MA 02091  




NO.	DESCRIPTION	DATE	DR. BY	CHK. BY	APP. BY
A	ISSUED FOR CONSTRUCTION	1/26/2021	WAK	RCS	MEP

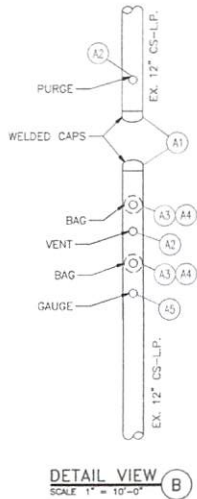
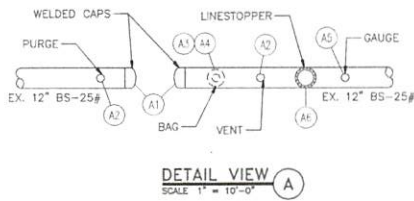
DWG NO.	DESIGNER	ENGINEER	DATE	ASSET ID	W.O. NO.
22-KVA	DDS COMPANIES	S. BRYDER	09/29/2021	270	800022047

PAGE 04 OF 13	
DRAWING NO.	SHEET NO.
C-001	04

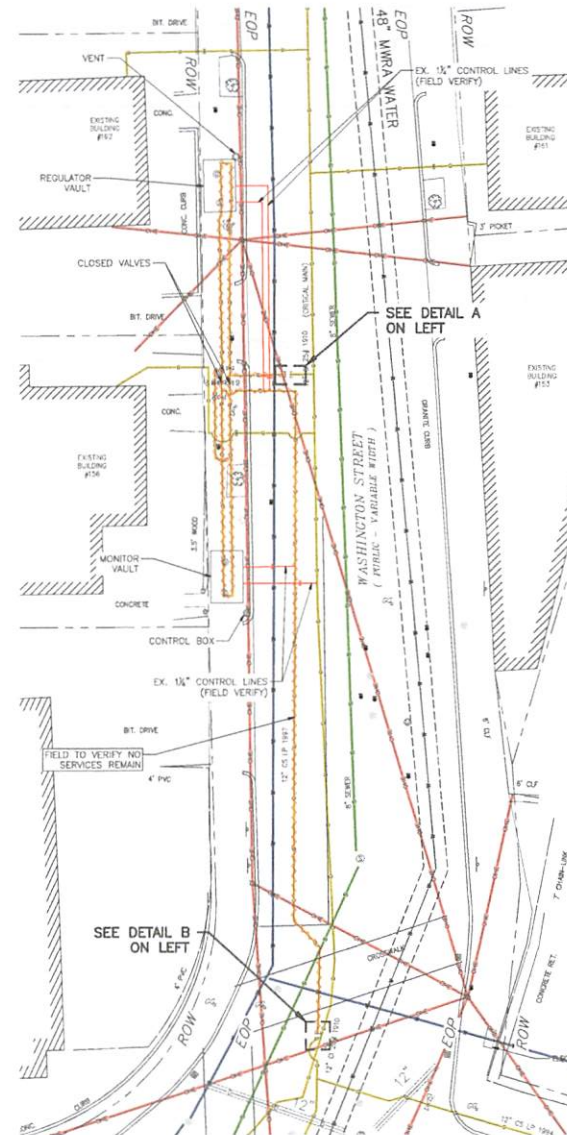
WASHINGTON STREET @ CLIFTON ST OPS  
 GAS REGULATOR STATION REPLACEMENT  
 WASHINGTON ST, CLIFTON ST, & SUMMER ST  
 MALDEN, MA  
**EXISTING CONDITIONS**





NOTE:  
VERIFY LOCATION OF ALL CONTROL LINES PRIOR  
TO ANY CONSTRUCTION. CONFIRM THAT ALL  
CONTROL LINES ARE ABANDONED AFTER PURGING.



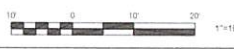
- GENERAL NOTES:
1. CONTACT I&R WHEN WORKING WITHIN 200 FT OF A REGULATOR STATION.
  2. CONFIRM THAT ALL EXISTING CONTROL LINES ARE ABANDONED/CAPPED AS CLOSE TO THE MAIN AS POSSIBLE.
  3. REMOVE ALL REGULATORS, TELEMTRY, AND PIPING FROM THE OLD VAULT.
  4. REMOVE VAULT ROOF, WALLS AND BACKFILL.
  5. ALL CURBING, PAVEMENT, SIDEWALKS, DRIVEWAYS, TRAFFIC SIGNAL LOOPS, FENCES, ETC. MUST BE RESTORED IN KIND AND/OR TO MUNICIPAL STANDARDS.



 <p>45 HENDRIX ROAD WEST HENRIETTA, NY 14388 PHONE: 585-358-7000 FAX: 585-358-7500</p>	<p>BOSTON GAS COMPANY DIVISION</p> <p><b>nationalgrid</b></p> <p>40 SYLVAN ROAD WALTHAM, MA 02451</p> <p>IFC</p>		<p>WASHINGTON STREET @ CLIFTON ST @PS GAS REGULATOR STATION REPLACEMENT WASHINGTON ST. CLIFTON ST. &amp; SUMMER ST MALDEN, MA</p> <p><b>ABANDONMENT</b></p>		<p>PAGE 06 OF 13</p> <p>DRAWING NO. C-003 SHEET NO. 06</p>																				
	<table border="1"> <thead> <tr> <th>NO.</th> <th>DESCRIPTION</th> <th>DATE</th> <th>DR BY</th> <th>CHK BY</th> <th>APP BY</th> <th>DWG SIZE</th> <th>DESIGNER</th> <th>ESTIMATOR</th> <th>DATE</th> <th>ASSET I.D.</th> <th>W.O. NO.</th> </tr> </thead> <tbody> <tr> <td>A</td> <td>ISSUED FOR CONSTRUCTION</td> <td>10/5/2021</td> <td>WAK</td> <td>SCR</td> <td>WEP</td> <td>27"x34"</td> <td>DDS COMPANIES</td> <td>S. MYGREN</td> <td>09/28/2021</td> <td>275</td> <td>90902205847</td> </tr> </tbody> </table>		NO.	DESCRIPTION	DATE	DR BY	CHK BY	APP BY	DWG SIZE	DESIGNER	ESTIMATOR	DATE	ASSET I.D.	W.O. NO.	A	ISSUED FOR CONSTRUCTION	10/5/2021	WAK	SCR	WEP	27"x34"	DDS COMPANIES	S. MYGREN	09/28/2021	275
NO.	DESCRIPTION	DATE	DR BY	CHK BY	APP BY	DWG SIZE	DESIGNER	ESTIMATOR	DATE	ASSET I.D.	W.O. NO.														
A	ISSUED FOR CONSTRUCTION	10/5/2021	WAK	SCR	WEP	27"x34"	DDS COMPANIES	S. MYGREN	09/28/2021	275	90902205847														



NOTE:  
 1. ALL CURBING, PAVEMENT, SIDEWALKS, DRIVEWAYS, TRAFFIC SIGNAL LOOPS, FENCES, ETC. MUST BE RESTORED IN KIND AND/OR TO MUNICIPAL STANDARDS.



45 HENDRIX ROAD  
 WEST NEWBURY, NY 14588  
 PHONE: (607) 338-7046  
 FAX: (607) 338-7047

BOSTON GAS COMPANY  
 9/9/20  
**nationalgrid**  
 40 SYLVAN ROAD  
 WALTHAM, MA 02451

IFC



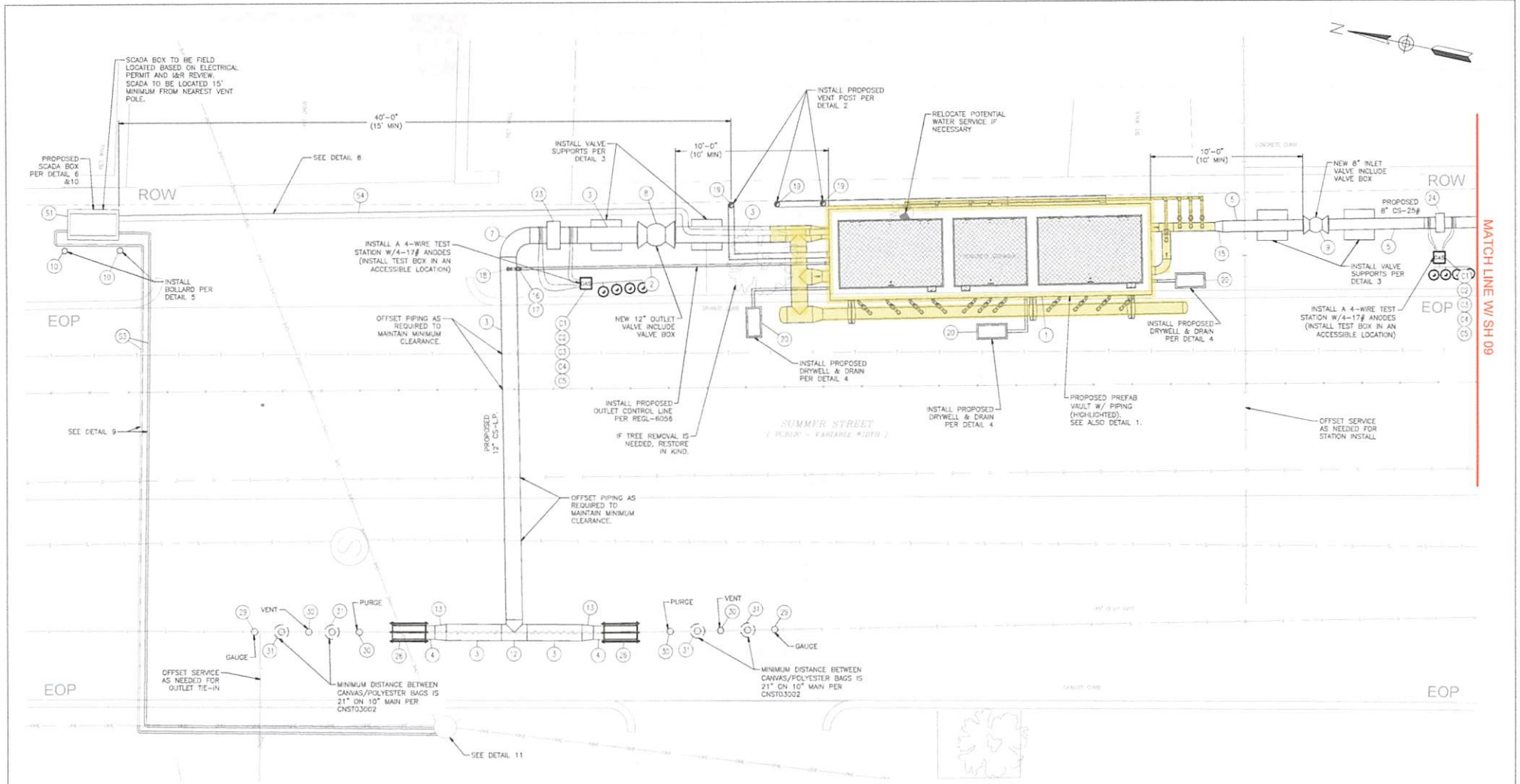
NO.	DESCRIPTION	DATE	DRWN	CHK BY	APP'D
A	ISSUED FOR CONSTRUCTION	12/01/2021	WMA	GGC	MSF

DWG NO.	DESIGNER	ENGINEER	DATE	ASSET ID.	W.D. NO.
22-43P	DDS COMPANIES	S. RAYDER	09/09/2021	270	9000220647

PAGE 27 OF 13	
DRAWING NO.	SHEET NO.
C-004	07

WASHINGTON STREET @ CLIFTON ST ORS  
 GAS REGULATOR STATION REPLACEMENT  
 WASHINGTON ST, CLIFTON ST, & SUMMER ST  
 MALDEN, MA

**PROPOSED CONDITIONS**



DETAIL VIEW C  
SCALE 1" = 3'-0"

NOTE:  
1. ALL CURBING, PAVEMENT, SIDEWALKS, DRIVEWAYS, TRAFFIC SIGNAL LOOPS, FENCES, ETC. MUST BE RESTORED IN KIND AND/OR TO MUNICIPAL STANDARDS.

**THE DDS COMPANIES**  
45 HENDRIX ROAD  
WEST HEWLETTPOLY, NY 11558  
PHONE: 516-339-7200  
FAX: 516-339-7247  
71210158

BOSTON GAS COMPANY  
12/1/19  
**nationalgrid**  
40 SYLVAN ROAD  
WALDEN, MA 02451  
**IFC**



NO.	DESCRIPTION	DATE	DR.	BY	CHK.	APP.
A	ISSUED FOR CONSTRUCTION	10/01/2021	PKW	SCR	MEP	

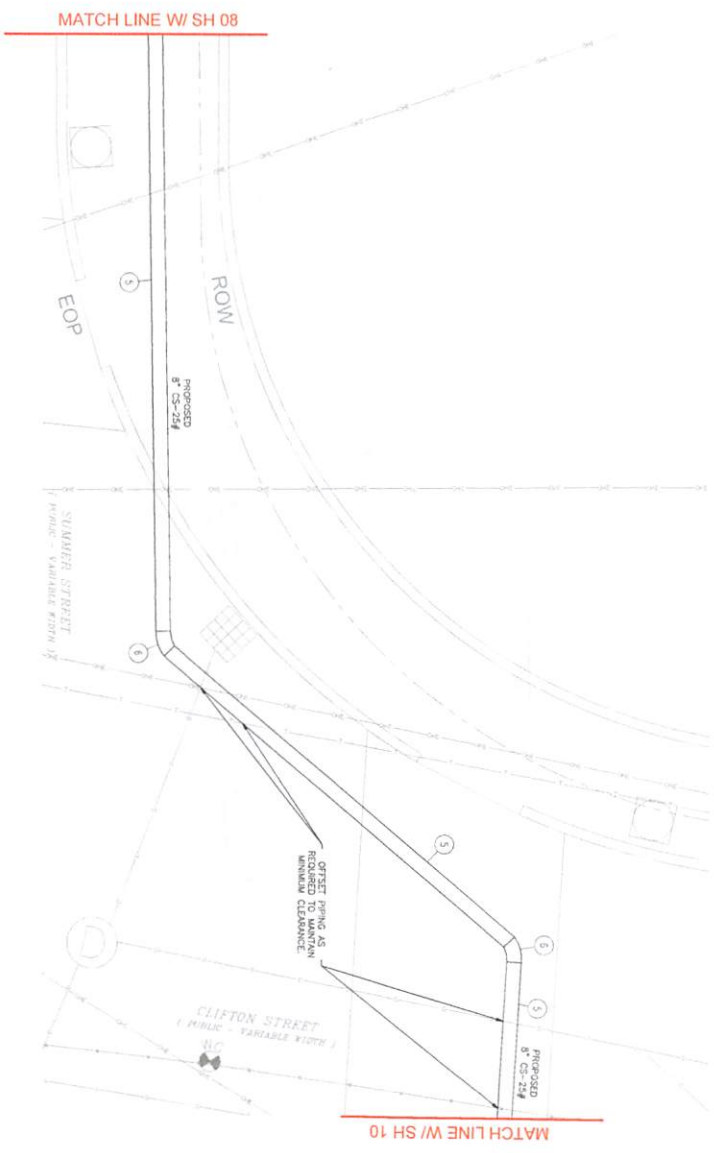
WASHINGTON STREET @ CLIFTON ST OPS  
GAS REGULATOR STATION REPLACEMENT  
WASHINGTON ST, CLIFTON ST, & SUMMER ST  
MALDEN, MA

**TIE-IN & ABANDONMENT DETAILS**

DWG. SIZE	DESIGNER	ENGINEER	DATE	ASSET I.D.	W.O. NO.
22"x34"	DDS COMPANIES	S. OLYVKA	09/29/2021	270	000022687

PAGE 08 OF 13	
DRAWING NO.	SHEET NO.
M-001	08





DETAIL VIEW C  
SCALE 1" = 3'-0"

NOTE:  
1. ALL CURBING, PAVEMENT, SIDEWALKS, DRIVEWAYS, TRAFFIC SIGNAL LOOPS, FENCES, ETC. MUST BE RESTORED IN KIND AND/OR TO MUNICIPAL STANDARDS.



42 HENRIER ROAD  
WEST GOSHEN, NY 14586  
CALL 607.351.2000

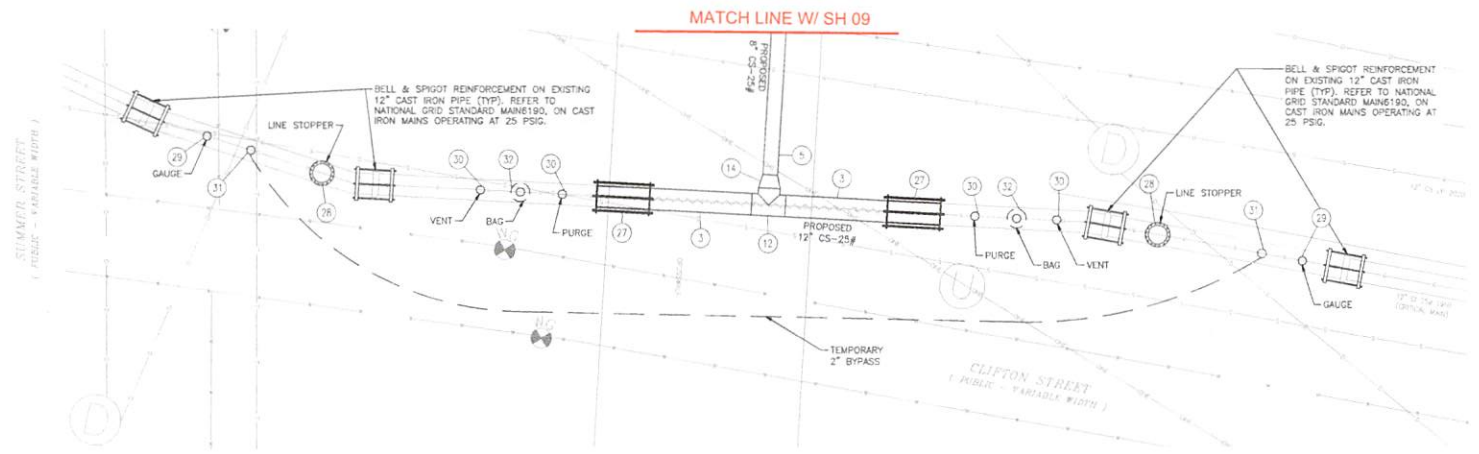
80700 043 COMPANY  
nationalgrid  
145 STEVEN ROAD  
WEST GOSHEN, NY 14586  
IFC



NO.	REVISION	DATE	BY	CHKD	APP'D
1	REVISION				

WASHINGTON STREET @ CLIFTON ST GAS  
REGULATOR STATION REPLACEMENT  
WASHINGTON ST, CLIFTON ST, & SUMMIT ST  
WALTON, VA  
**TIE-IN & ABANDONMENT DETAILS**

DATE: 08/14/11	DRAWN BY: M-002	SHEET NO: 09
----------------	-----------------	--------------



DETAIL VIEW C  
SCALE 1" = 3'-0"

- NOTE:
1. CAST IRON BELL JOINTS ARE ASSUMED TO BE 12 FEET APART O.C. FIELD VERIFY LOCATION OF BELL JOINTS PRIOR TO BEGINNING WORK.
  2. ALL CURBING, PAVEMENT, SIDEWALKS, DRIVEWAYS, TRAFFIC SIGNAL LOOPS, FENCES, ETC. MUST BE RESTORED IN KIND AND/OR TO MUNICIPAL STANDARDS.



45 HENRIKX ROAD  
WEST NEWFRETTLA, NY 14588  
PHONE: 607.258.2040  
FAX: 607.258.7547

BOSTON GAS COMPANY  
GVA

**nationalgrid**

40 SYLVAN ROAD  
MILFORD, MA 02148

IFC



NO.	DESCRIPTION	DATE	DR BY	CHK BY	APP'D
A	ISSUED FOR CONSTRUCTION	10/1/2021	BAK	SDR	MEP

WASHINGTON STREET @ CLIFTON ST CRIS  
GAS REGULATOR STATION REPLACEMENT  
WASHINGTON ST. & SUMMER ST  
MALDEN, MA

**TIE-IN & ABANDONMENT DETAILS**

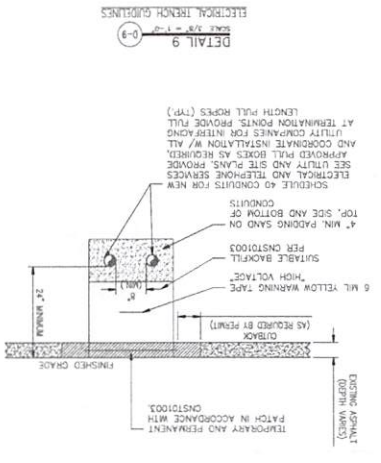
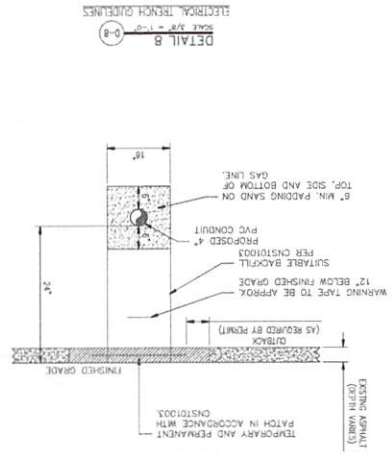
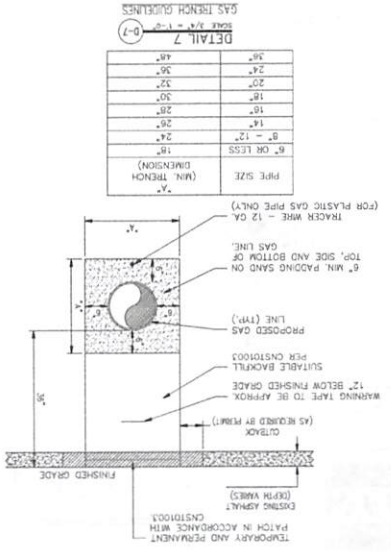
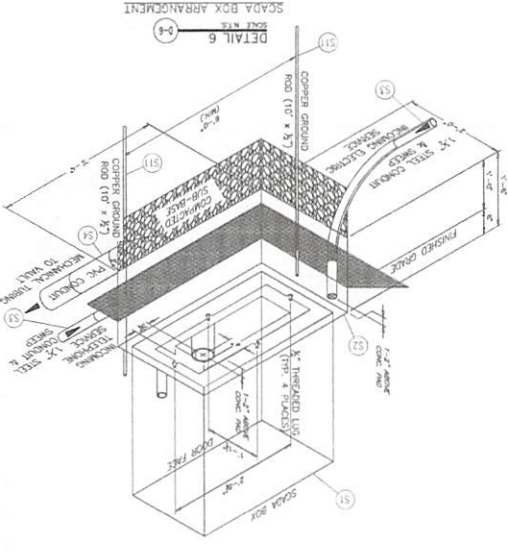
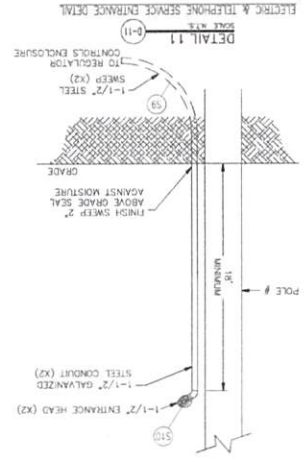
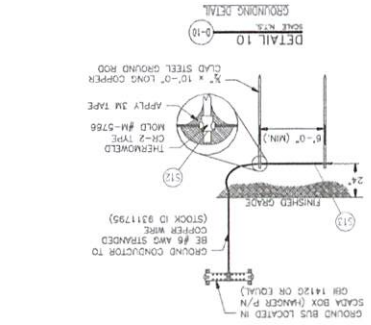
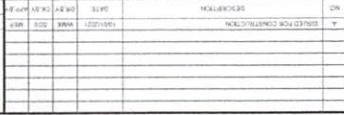
NO.	DESCRIPTION	DATE	DR BY	CHK BY	APP'D
27	134				

DESIGNER: DDS COMPANIES  
ENGINEER: J. BEYER  
DATE: 09/29/2021  
ASSET ID: 270  
W.O. NO.: 8000202067

PAGE 10 OF 13	
DRAWING NO.	SHEET NO.
M-003	10



NO.	DESCRIPTION	DATE	BY	CHK BY	APP BY
1	FOUNDATION CONSTRUCTION				
2	FOUNDATION CONSTRUCTION				
3	FOUNDATION CONSTRUCTION				
4	FOUNDATION CONSTRUCTION				
5	FOUNDATION CONSTRUCTION				
6	FOUNDATION CONSTRUCTION				
7	FOUNDATION CONSTRUCTION				
8	FOUNDATION CONSTRUCTION				
9	FOUNDATION CONSTRUCTION				
10	FOUNDATION CONSTRUCTION				
11	FOUNDATION CONSTRUCTION				
12	FOUNDATION CONSTRUCTION				
13	FOUNDATION CONSTRUCTION				
14	FOUNDATION CONSTRUCTION				
15	FOUNDATION CONSTRUCTION				
16	FOUNDATION CONSTRUCTION				
17	FOUNDATION CONSTRUCTION				
18	FOUNDATION CONSTRUCTION				
19	FOUNDATION CONSTRUCTION				
20	FOUNDATION CONSTRUCTION				
21	FOUNDATION CONSTRUCTION				
22	FOUNDATION CONSTRUCTION				
23	FOUNDATION CONSTRUCTION				
24	FOUNDATION CONSTRUCTION				
25	FOUNDATION CONSTRUCTION				
26	FOUNDATION CONSTRUCTION				
27	FOUNDATION CONSTRUCTION				
28	FOUNDATION CONSTRUCTION				
29	FOUNDATION CONSTRUCTION				
30	FOUNDATION CONSTRUCTION				
31	FOUNDATION CONSTRUCTION				
32	FOUNDATION CONSTRUCTION				
33	FOUNDATION CONSTRUCTION				
34	FOUNDATION CONSTRUCTION				
35	FOUNDATION CONSTRUCTION				
36	FOUNDATION CONSTRUCTION				
37	FOUNDATION CONSTRUCTION				
38	FOUNDATION CONSTRUCTION				
39	FOUNDATION CONSTRUCTION				
40	FOUNDATION CONSTRUCTION				
41	FOUNDATION CONSTRUCTION				
42	FOUNDATION CONSTRUCTION				
43	FOUNDATION CONSTRUCTION				
44	FOUNDATION CONSTRUCTION				
45	FOUNDATION CONSTRUCTION				
46	FOUNDATION CONSTRUCTION				
47	FOUNDATION CONSTRUCTION				
48	FOUNDATION CONSTRUCTION				
49	FOUNDATION CONSTRUCTION				
50	FOUNDATION CONSTRUCTION				
51	FOUNDATION CONSTRUCTION				
52	FOUNDATION CONSTRUCTION				
53	FOUNDATION CONSTRUCTION				
54	FOUNDATION CONSTRUCTION				
55	FOUNDATION CONSTRUCTION				
56	FOUNDATION CONSTRUCTION				
57	FOUNDATION CONSTRUCTION				
58	FOUNDATION CONSTRUCTION				
59	FOUNDATION CONSTRUCTION				
60	FOUNDATION CONSTRUCTION				
61	FOUNDATION CONSTRUCTION				
62	FOUNDATION CONSTRUCTION				
63	FOUNDATION CONSTRUCTION				
64	FOUNDATION CONSTRUCTION				
65	FOUNDATION CONSTRUCTION				
66	FOUNDATION CONSTRUCTION				
67	FOUNDATION CONSTRUCTION				
68	FOUNDATION CONSTRUCTION				
69	FOUNDATION CONSTRUCTION				
70	FOUNDATION CONSTRUCTION				
71	FOUNDATION CONSTRUCTION				
72	FOUNDATION CONSTRUCTION				
73	FOUNDATION CONSTRUCTION				
74	FOUNDATION CONSTRUCTION				
75	FOUNDATION CONSTRUCTION				
76	FOUNDATION CONSTRUCTION				
77	FOUNDATION CONSTRUCTION				
78	FOUNDATION CONSTRUCTION				
79	FOUNDATION CONSTRUCTION				
80	FOUNDATION CONSTRUCTION				
81	FOUNDATION CONSTRUCTION				
82	FOUNDATION CONSTRUCTION				
83	FOUNDATION CONSTRUCTION				
84	FOUNDATION CONSTRUCTION				
85	FOUNDATION CONSTRUCTION				
86	FOUNDATION CONSTRUCTION				
87	FOUNDATION CONSTRUCTION				
88	FOUNDATION CONSTRUCTION				
89	FOUNDATION CONSTRUCTION				
90	FOUNDATION CONSTRUCTION				
91	FOUNDATION CONSTRUCTION				
92	FOUNDATION CONSTRUCTION				
93	FOUNDATION CONSTRUCTION				
94	FOUNDATION CONSTRUCTION				
95	FOUNDATION CONSTRUCTION				
96	FOUNDATION CONSTRUCTION				
97	FOUNDATION CONSTRUCTION				
98	FOUNDATION CONSTRUCTION				
99	FOUNDATION CONSTRUCTION				
100	FOUNDATION CONSTRUCTION				



ITEM	QTY	UOM	DESCRIPTION	SIZE (IN.)	THICKNESS (IN.)	MATERIAL SPECIFICATION	GRADE	RATING / CLASS	NATIONAL GRID REFERENCE	MATERIAL PROVIDED BY	PO# / STOCK ID	STOCKROOM
1	EA	SR STD 1/2-30		N/A	-		-	-				
2	30	FT	PIPE, CARBON STEEL, BARE, 3/4" WALL	1-1/4	0.191	API 6L PSL-1	GRADE B	-	12020-MS	NATIONAL GRID	NON STOCK	BAY 5/1'E
3	60	FT	PIPE, COATED W/ 140 PERIC	1-1/4	0.315	API 6L PSL-1	GRADE B	-	12020-MS	NATIONAL GRID	NON STOCK	WILMINGTON
4	5	FT	PIPE, COATED W/ 140 PERIC	10	0.366	API 6L PSL-1	GRADE B	-	12020-MS	NATIONAL GRID	NON STOCK	WILMINGTON
5	90	FT	PIPE, COATED W/ 140 PERIC	8	0.322	API 6L PSL-2	GRADE WPB	-	12020-MS	NATIONAL GRID	NON STOCK	WILMINGTON
6	2	EA	ELBOW, 45 DEG LR BW, SEGMENTABLE	8	0.322	ASTM A234 ASME B16.9	GRADE WPB	-	MATL-3100	NATIONAL GRID	NON STOCK	WILMINGTON
7	1	EA	ELBOW, 90 DEG LR BW, SEGMENTABLE	12	0.315	ASTM A234 ASME B16.9	GRADE WPB	-	MATL-3100	NATIONAL GRID	NON STOCK	WILMINGTON
8	1	EA	VALVE, BALL, DELTA, PG 55, FULL PORT, WE X WE, W/ VALVE BOX	12	0.315	API 6D ASME B31.8	L-F2	-	MATL-3150	NATIONAL GRID	NON STOCK	IBF
9	1	EA	VALVE, BALL, DELTA, PG 55, FULL PORT, WE X WE, W/ VALVE BOX	8	0.322	API 6D ASME B31.8	L-F2	-	MATL-3150	NATIONAL GRID	NON STOCK	IBF
10	2	EA	4" DA BOLLO, 4" HIGH	4	-	-	-	-	REG-0600	NATIONAL GRID	NON STOCK	IBF
11	1	EA	ROLL YELLOW CAUTION TAPE, GAS MAN, 6" WIDE	-	-	-	-	-	-	NATIONAL GRID	NON STOCK	WILMINGTON
12	2	EA	WEILD, STEEL	12	0.315	ASTM A234 ASME B16.9	GRADE WPB	-	MATL-3100	NATIONAL GRID	NON STOCK	WILMINGTON
13	2	EA	REDUCER, STEEL, CONCENTRIC	12X10	0.315/0.305	ASTM A234	GRADE WPB	-	MATL-3100	NATIONAL GRID	NON STOCK	WILMINGTON
14	1	EA	REDUCER, STEEL, CONCENTRIC	12X8	0.315/0.322	ASTM A234	GRADE WPB	-	MATL-3100	NATIONAL GRID	NON STOCK	WILMINGTON
15	1	EA	REDUCER, STEEL, CONCENTRIC	8X6	0.322/0.280	ASTM A234	GRADE WPB	-	MATL-3100	NATIONAL GRID	NON STOCK	WILMINGTON
16	1	EA	VALVE, BALL, KEROSET, WELDBALL, WE X WE, W/ VALVE BOX	1-1/4	0.191	API 6D ASME B31.8	-	-	ANSI 150	NATIONAL GRID	NON STOCK	WILMINGTON
17	1	EA	1-1/4" VALVE BOX ASSEMBLY	-	-	-	-	-	-	NATIONAL GRID	NON STOCK	WILMINGTON
18	1	EA	WRIELFR NO RIO TE, WLDY WELD, H-780	1-1/4	-	-	-	-	-	NATIONAL GRID	NON STOCK	WILMINGTON
19	3	EA	VENT POST, EXTENDED 4 FT ABOVE GRADE	5	-	-	-	-	-	NATIONAL GRID	NON STOCK	BAY 5/1'E
20	3	EA	PREWELL, CONCRETE, PRECAST, MODEL DB & ROTUNDO & SONS	-	-	-	-	-	-	NATIONAL GRID	NON STOCK	WILMINGTON
21	1	EA	PVC DRAIN PIPE, SCHEDULE 40	1-1/2	-	-	-	-	-	CONTRACTOR	-	-
22	1	EA	PVC DRN PIPE, SCHEDULE 40 FOR DRAINAGE	1-1/2	-	-	-	-	-	CONTRACTOR	-	-
23	1	EA	INSULATING JOINT, WELD END	12	0.315	API 6L PSL-1	GRADE B	-	ANSI 300	NATIONAL GRID	NON STOCK	WILMINGTON
24	1	EA	INSULATING JOINT, WELD END	8	0.322	API 6L PSL-1	GRADE B	-	ANSI 300	NATIONAL GRID	NON STOCK	WILMINGTON
25	1	EA	INSULATING JOINT, WELD END	1-1/4	0.191	ASME B16.11, ASTM A105	GRADE B	-	MATL-3100	NATIONAL GRID	NON STOCK	IBF
26	2	EA	COUPLING, COMPRESSION, NON-RESTRAINING, INSULATED BOLTED, C/T O STEEL	10	-	-	-	-	50 PSI	NATIONAL GRID	NON STOCK	WILMINGTON
27	2	EA	COUPLING, COMPRESSION, RESTRAINING, INSULATED BOLTED, C/T O STEEL	12	-	-	-	-	50 PSI	NATIONAL GRID	NON STOCK	WILMINGTON
28	2	EA	FRINGE, LANE STOPPER FOR 12 IN CAST IRON MAN, WITH 4 IN OULE FLANGE	12	-	-	-	-	CL 150	NATIONAL GRID	NON STOCK	SUTTON
29	4	EA	PLUG, CAST IRON, CORED SQUARE HEAD, SCHEDULE 40	3/4	-	-	-	-	-	NATIONAL GRID	NON STOCK	WILMINGTON
30	6	EA	PLUG, CAST IRON, CORED SQUARE HEAD, SCHEDULE 40	1-1/4	-	-	-	-	-	NATIONAL GRID	NON STOCK	WILMINGTON
31	6	EA	PLUG, CAST IRON, CORED SQUARE HEAD, SCHEDULE 40	2	-	-	-	-	-	NATIONAL GRID	NON STOCK	WILMINGTON
32	2	EA	PLUG, CAST IRON, CORED SQUARE HEAD, SCHEDULE 40	2-1/2	-	-	-	-	-	NATIONAL GRID	NON STOCK	WILMINGTON
<b>FOR ELECTRICAL AND SCADA</b>												
31	1	EA	ISOLATION BOX, NEMA 3R ENCLOSURE, W/ CONCRETE BASE	30 x 50 x 18	-	-	-	-	-	NATIONAL GRID	NON STOCK	-
32	1	EA	CONCRETE PAD	40 x 24 x 18	-	-	-	-	-	CONTRACTOR	-	-
33	1	EA	CONDUIT, RIGID METAL, FOR ELECTRICAL/TELECOM	1-1/2	-	-	-	-	-	CONTRACTOR	-	-
34	1	EA	CONDUIT, RIGID METAL, FOR ELECTRICAL/TELECOM	1-1/2	-	-	-	-	-	CONTRACTOR	-	-
35	1	EA	CONDUIT, RIGID METAL, FOR ELECTRICAL/TELECOM	1-1/2	-	-	-	-	-	CONTRACTOR	-	-
36	1	EA	CONDUIT, RIGID METAL, FOR ELECTRICAL/TELECOM	1-1/2	-	-	-	-	-	CONTRACTOR	-	-
37	1	EA	CONDUIT, RIGID METAL, FOR ELECTRICAL/TELECOM	1-1/2	-	-	-	-	-	CONTRACTOR	-	-
38	1	EA	CONDUIT, RIGID METAL, FOR ELECTRICAL/TELECOM	1-1/2	-	-	-	-	-	CONTRACTOR	-	-
39	1	EA	CONDUIT, RIGID METAL, FOR ELECTRICAL/TELECOM	1-1/2	-	-	-	-	-	CONTRACTOR	-	-
40	1	EA	CONDUIT, RIGID METAL, FOR ELECTRICAL/TELECOM	1-1/2	-	-	-	-	-	CONTRACTOR	-	-
41	1	EA	CONDUIT, RIGID METAL, FOR ELECTRICAL/TELECOM	1-1/2	-	-	-	-	-	CONTRACTOR	-	-
42	1	EA	CONDUIT, RIGID METAL, FOR ELECTRICAL/TELECOM	1-1/2	-	-	-	-	-	CONTRACTOR	-	-
43	1	EA	CONDUIT, RIGID METAL, FOR ELECTRICAL/TELECOM	1-1/2	-	-	-	-	-	CONTRACTOR	-	-
44	1	EA	CONDUIT, RIGID METAL, FOR ELECTRICAL/TELECOM	1-1/2	-	-	-	-	-	CONTRACTOR	-	-
45	1	EA	CONDUIT, RIGID METAL, FOR ELECTRICAL/TELECOM	1-1/2	-	-	-	-	-	CONTRACTOR	-	-
46	1	EA	CONDUIT, RIGID METAL, FOR ELECTRICAL/TELECOM	1-1/2	-	-	-	-	-	CONTRACTOR	-	-
47	1	EA	CONDUIT, RIGID METAL, FOR ELECTRICAL/TELECOM	1-1/2	-	-	-	-	-	CONTRACTOR	-	-
48	1	EA	CONDUIT, RIGID METAL, FOR ELECTRICAL/TELECOM	1-1/2	-	-	-	-	-	CONTRACTOR	-	-
49	1	EA	CONDUIT, RIGID METAL, FOR ELECTRICAL/TELECOM	1-1/2	-	-	-	-	-	CONTRACTOR	-	-
50	1	EA	CONDUIT, RIGID METAL, FOR ELECTRICAL/TELECOM	1-1/2	-	-	-	-	-	CONTRACTOR	-	-
51	1	EA	CONDUIT, RIGID METAL, FOR ELECTRICAL/TELECOM	1-1/2	-	-	-	-	-	CONTRACTOR	-	-
52	1	EA	CONDUIT, RIGID METAL, FOR ELECTRICAL/TELECOM	1-1/2	-	-	-	-	-	CONTRACTOR	-	-
53	1	EA	CONDUIT, RIGID METAL, FOR ELECTRICAL/TELECOM	1-1/2	-	-	-	-	-	CONTRACTOR	-	-
54	1	EA	CONDUIT, RIGID METAL, FOR ELECTRICAL/TELECOM	1-1/2	-	-	-	-	-	CONTRACTOR	-	-
55	1	EA	CONDUIT, RIGID METAL, FOR ELECTRICAL/TELECOM	1-1/2	-	-	-	-	-	CONTRACTOR	-	-
56	1	EA	CONDUIT, RIGID METAL, FOR ELECTRICAL/TELECOM	1-1/2	-	-	-	-	-	CONTRACTOR	-	-
57	1	EA	CONDUIT, RIGID METAL, FOR ELECTRICAL/TELECOM	1-1/2	-	-	-	-	-	CONTRACTOR	-	-
58	1	EA	CONDUIT, RIGID METAL, FOR ELECTRICAL/TELECOM	1-1/2	-	-	-	-	-	CONTRACTOR	-	-
59	1	EA	CONDUIT, RIGID METAL, FOR ELECTRICAL/TELECOM	1-1/2	-	-	-	-	-	CONTRACTOR	-	-
60	1	EA	CONDUIT, RIGID METAL, FOR ELECTRICAL/TELECOM	1-1/2	-	-	-	-	-	CONTRACTOR	-	-
61	1	EA	CONDUIT, RIGID METAL, FOR ELECTRICAL/TELECOM	1-1/2	-	-	-	-	-	CONTRACTOR	-	-
62	1	EA	CONDUIT, RIGID METAL, FOR ELECTRICAL/TELECOM	1-1/2	-	-	-	-	-	CONTRACTOR	-	-
63	1	EA	CONDUIT, RIGID METAL, FOR ELECTRICAL/TELECOM	1-1/2	-	-	-	-	-	CONTRACTOR	-	-
64	1	EA	CONDUIT, RIGID METAL, FOR ELECTRICAL/TELECOM	1-1/2	-	-	-	-	-	CONTRACTOR	-	-
65	1	EA	CONDUIT, RIGID METAL, FOR ELECTRICAL/TELECOM	1-1/2	-	-	-	-	-	CONTRACTOR	-	-
66	1	EA	CONDUIT, RIGID METAL, FOR ELECTRICAL/TELECOM	1-1/2	-	-	-	-	-	CONTRACTOR	-	-
67	1	EA	CONDUIT, RIGID METAL, FOR ELECTRICAL/TELECOM	1-1/2	-	-	-	-	-	CONTRACTOR	-	-
68	1	EA	CONDUIT, RIGID METAL, FOR ELECTRICAL/TELECOM	1-1/2	-	-	-	-	-	CONTRACTOR	-	-
69	1	EA	CONDUIT, RIGID METAL, FOR ELECTRICAL/TELECOM	1-1/2	-	-	-	-	-	CONTRACTOR	-	-
70	1	EA	CONDUIT, RIGID METAL, FOR ELECTRICAL/TELECOM	1-1/2	-	-	-	-	-	CONTRACTOR	-	-
71	1	EA	CONDUIT, RIGID METAL, FOR ELECTRICAL/TELECOM	1-1/2	-	-	-	-	-	CONTRACTOR	-	-
72	1	EA	CONDUIT, RIGID METAL, FOR ELECTRICAL/TELECOM	1-1/2	-	-	-	-	-	CONTRACTOR	-	-
73	1	EA	CONDUIT, RIGID METAL, FOR ELECTRICAL/TELECOM	1-1/2	-	-	-	-	-	CONTRACTOR	-	-
74	1	EA	CONDUIT, RIGID METAL, FOR ELECTRICAL/TELECOM	1-1/2	-	-	-	-	-	CONTRACTOR	-	-
75	1	EA	CONDUIT, RIGID METAL, FOR ELECTRICAL/TELECOM	1-1/2	-	-	-	-	-	CONTRACTOR	-	-
76	1	EA	CONDUIT, RIGID METAL, FOR ELECTRICAL/TELECOM	1-1/2	-	-	-	-	-	CONTRACTOR	-	-
77	1	EA	CONDUIT, RIGID METAL, FOR ELECTRICAL/TELECOM	1-1/2	-	-	-	-	-	CONTRACTOR	-	-
78	1	EA	CONDUIT, RIGID METAL, FOR ELECTRICAL/TELECOM	1-1/2	-	-	-	-	-	CONTRACTOR	-	-
79	1	EA	CONDUIT, RIGID METAL, FOR ELECTRICAL/TELECOM	1-1/2	-	-	-	-	-	CONTRACTOR	-	-
80	1	EA	CONDUIT, RIGID METAL, FOR ELECTRICAL/TELECOM	1-1/2	-	-	-	-	-	CONTRACTOR	-	-
81	1	EA	CONDUIT, RIGID METAL, FOR ELECTRICAL/TELECOM	1-1/2	-	-	-	-	-	CONTRACTOR	-	-
82	1	EA	CONDUIT, RIGID METAL, FOR ELECTRICAL/TELECOM	1-1/2	-	-	-	-	-	CONTRACTOR	-	-
83	1	EA	CONDUIT, RIGID METAL, FOR ELECTRICAL/TELECOM	1-1/2	-	-	-	-	-	CONTRACTOR	-	-
84	1	EA	CONDUIT, RIGID METAL, FOR ELECTRICAL/TELECOM	1-1/2	-	-	-	-	-	CONTRACTOR	-	-
85	1	EA	CONDUIT, RIGID METAL, FOR ELECTRICAL/TELECOM	1-1/2	-	-	-	-	-	CONTRACTOR	-	-
86	1	EA	CONDUIT, RIGID METAL, FOR ELECTRICAL/TELECOM	1-1/2	-	-	-	-	-	CONTRACTOR	-	-
87	1	EA	CONDUIT, RIGID METAL, FOR ELECTRICAL/TELECOM	1-1/2	-	-	-	-	-	CONTRACTOR	-	-
88	1	EA	CONDUIT, RIGID METAL, FOR ELECTRICAL/TELECOM	1-1/2	-	-	-	-	-	CONTRACTOR	-	-
89	1	EA	CONDUIT, RIGID METAL, FOR ELECTRICAL/TELECOM	1-1/2	-	-	-	-	-	CONTRACTOR	-	-
90	1	EA	CONDUIT, RIGID METAL, FOR ELECTRICAL/TELECOM	1-1/2	-	-	-	-	-	CONTRACTOR	-	-
91	1	EA	CONDUIT, RIGID METAL, FOR ELECTRICAL/TELECOM	1-1/2	-	-	-	-	-	CONTRACTOR	-	-
92	1	EA	CONDUIT, RIGID METAL, FOR ELECTRICAL/TELECOM	1-1/2	-	-	-	-	-	CONTRACTOR	-	-
93	1	EA	CONDUIT, RIGID METAL, FOR ELECTRICAL/TELECOM	1-1/2	-	-	-	-	-	CONTRACTOR	-	-
94	1	EA	CONDUIT, RIGID METAL, FOR ELECTRICAL/TELECOM	1-1/2	-	-	-	-	-	CONTRACTOR	-	-
95	1	EA	CONDUIT, RIGID METAL, FOR ELECTRICAL/TELECOM	1-1/2	-	-	-	-	-	CONTRACTOR	-	-
96	1	EA	CONDUIT, RIGID METAL, FOR ELECTRICAL/TELECOM	1-1/2	-	-	-	-	-	CONTRACTOR	-	-
97	1	EA	CONDUIT, RIGID METAL, FOR ELECTRICAL/TELECOM	1-1/2	-	-	-	-	-	CONTRACTOR	-	-
98	1	EA	CONDUIT, RIGID METAL, FOR ELECTRICAL/TELECOM	1-1/2	-	-	-	-	-	CONTRACTOR	-	-
99	1	EA	CONDUIT, RIGID METAL, FOR ELECTRICAL/TELECOM	1-1/2	-	-	-	-	-	CONTRACTOR	-	-
100	1	EA	CONDUIT, RIGID METAL, FOR ELECTRICAL/TELECOM	1-1/2	-	-	-	-	-	CONTRACTOR	-	-
<b>FOR CATHODIC PROTECTION &amp; COATING INSTALLATION</b>												
C1	2	EA	TP TEST BOX WITH COVER HEAVY DUTY	-	-	-	-	-	-	CONTRACTOR	-	-
C2	8	EA										