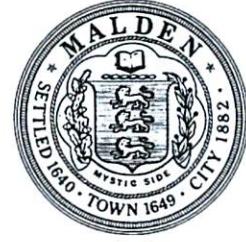


# City of Malden

## Massachusetts



Gregory Lucey, City Clerk  
[glucey@cityofmalden.org](mailto:glucey@cityofmalden.org)  
[www.cityofmalden.org](http://www.cityofmalden.org)

City Clerk's Office  
215 Pleasant Street 2<sup>nd</sup> Floor  
Malden, Massachusetts 02148

Phone 781-397-7116

## MALDEN CITY COUNCIL NOTICE OF PUBLIC HEARING

*In accordance with the requirements of Chapter 166 of the MA General Laws, you are hereby notified that the Malden City Council will hold a public hearing at 7:05 P.M. on Tuesday, March 29, 2022, at 215 Pleasant Street, City Council Chambers – Room #106 on petition from Cellco Partnership d/b/a Verizon, 118 Flanders Road, Westborough, MA.*

Cellco Partnership d/b/a Verizon – To collocate small wireless facilities (also referred to as “small cells” on existing wooden utility poles located within the public right of way at the following location:

1. 37-39 Wilard Street

Petition and plans are available for public review in the City Clerk's Office, 2<sup>nd</sup> Floor, 215 Pleasant Street, Malden, MA.

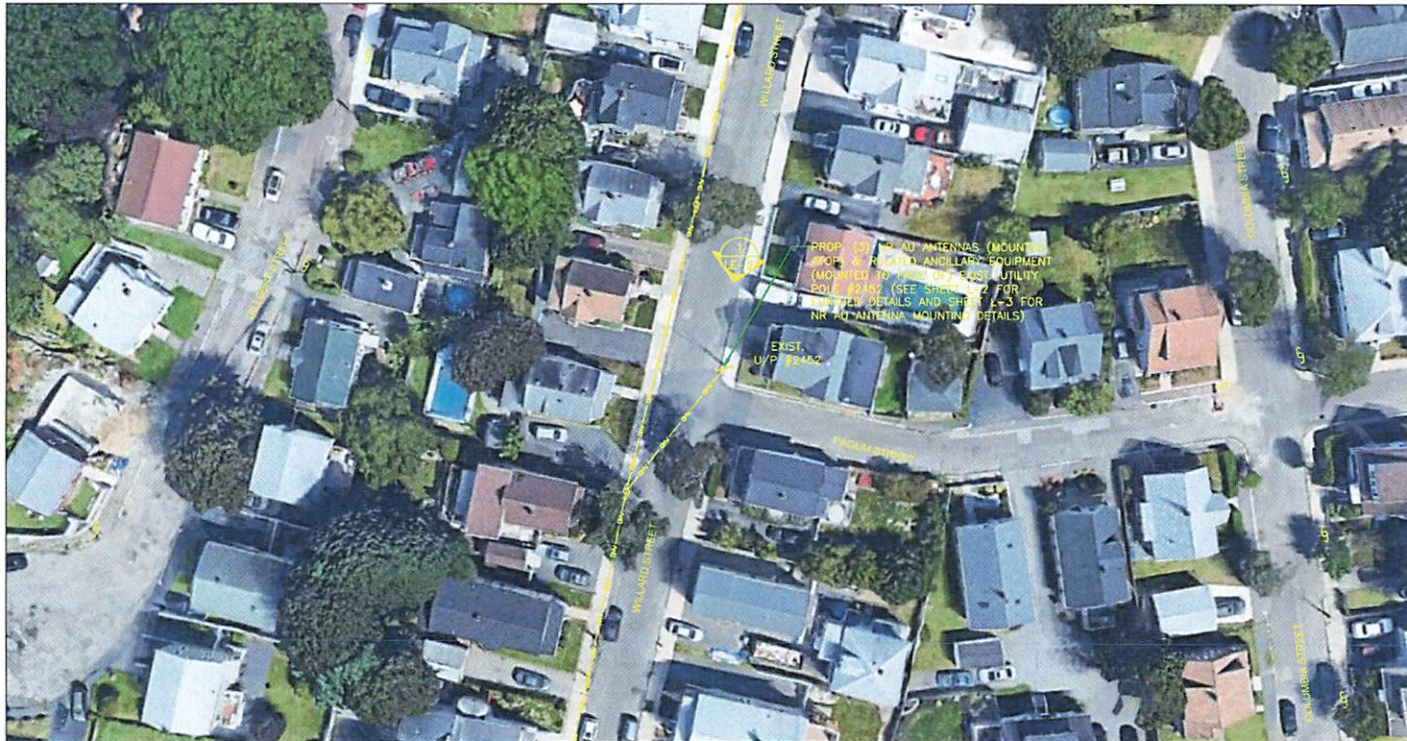
If you would like to request a reasonable accommodation, please contact Maria Luise, ADA Compliance Coordinator at [mluise@cityofmalden.org](mailto:mluise@cityofmalden.org) or 781-397-7000, Ext 2005.

*By: Gregory Lucey, City Clerk*

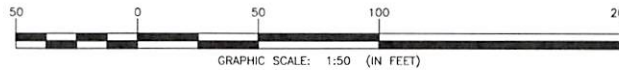
SITE NAME:  
BOS\_MALDEN\_066\_MA

LOCATION CODE:  
554230

SITE ADDRESS:  
UTILITY POLE NO.: 2452  
37-39 WILLARD STREET  
MALDEN, MA 02148



① KEY PLAN  
SCALE: 1" = 50'  
APPROX. NORTH



	LATITUDE (NAD83)	LONGITUDE (NAD83)
POLE COORDINATES	N 42.438408° ±	W 71.049889° ±
	N 42° 26' 18.27"	W 71° 02' 59.60"
GROUND ELEVATION	52' ± A.M.S.L. (NAVD88)	

SHEET INDEX	
SHEET NO.	SHEET DESCRIPTION
LE-1	KEY PLAN
LE-2	PHOTO DETAIL & ELEVATION
LE-3	EQUIPMENT PLAN, ANTENNA PLAN, DETAILS AND WIRING DIAGRAM

LEASE EXHIBIT  
(NOT FOR CONSTRUCTION)

PREPARED BY:  
**NEXIUS**  
TRANSFORM YOUR BUSINESS...THROUGH WIRELESS  
A&E OFFICE:  
300 APOLLO DRIVE, SUITE 7  
CHELMSFORD, MA 01824  
1 (978) 923-7965

PRESIDING POWER COMPANY:  
**nationalgrid**

PROFESSIONAL STAMP:

THIS DOCUMENT IS THE DESIGN PROPERTY AND COPYRIGHT OF NEXIUS AND FOR THE EXCLUSIVE USE BY THE TITLE CLIENT. DUPLICATION OR USE WITHOUT THE EXPRESS WRITTEN CONSENT OF THE CREATOR IS STRICTLY PROHIBITED.

DRAWING SCALES ARE INTENDED FOR 11"x17" SIZE PRINTED MEDIA ONLY. ALL OTHER PRINTED SIZES ARE DEEMED "NOT TO SCALE".

SUBMITTALS			
REV	DATE	DESCRIPTION	BY
0	10/21/19	FOR REVIEW	PM
1	01/07/21	REVISED PER NEW STAND.	AA

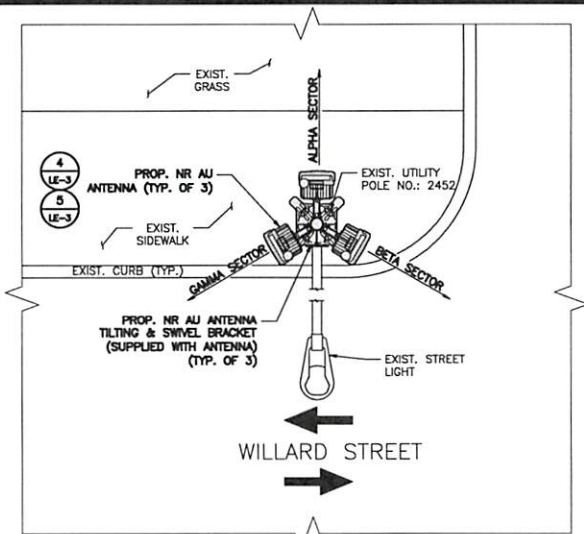
SITE INFO:  
SITE NAME:  
BOS\_MALDEN\_066\_MA  
SITE ADDRESS:  
U/P NO.: 2452  
37-39 WILLARD STREET  
MALDEN, MA 02148

CHECKED BY: KB/AA DATE: 01/07/21

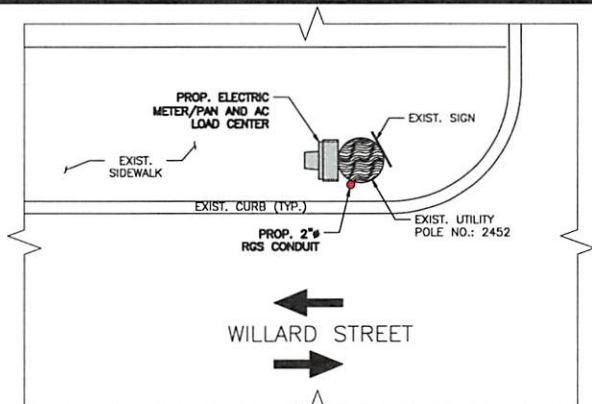
PROJECT NUMBER:  
20191981075

SHEET NUMBER:  
**LE-1**



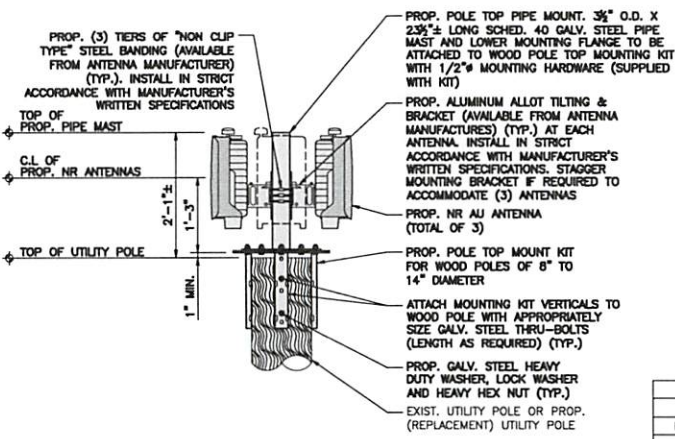


1 ANTENNA PLAN  
SCALE: N.T.S.  
APPROX. NORTH

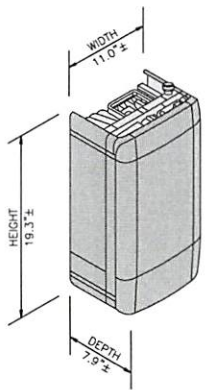


2 EQUIPMENT PLAN  
SCALE: N.T.S.  
APPROX. NORTH

NOTE:  
1. CONFIRM DOWNTILT REQUIREMENTS (IF ANY) AND AZIMUTH SPECIFICATIONS WITH VERIZON WIRELESS RF ENGINEER AT TIME OF CONSTRUCTIONS.  
2. MOUNT SHALL BE INSTALLED IN SUCH A WAY TO ENSURE PLUMB INSTALLATION OF PIPE MAST.  
3. EXIST. UTILITY POLE APPURTENANCES NOT SHOWN FOR CLARITY.



4 ANTENNA MOUNTING DETAIL  
N.T.S.



TYPICAL ANTENNA	
DIMENSIONS	19.3"±H x 11.0"±W x 7.9"±D
WEIGHT	38± LBS EACH
QUANTITY	1 PER SECTOR, TOTAL OF 3

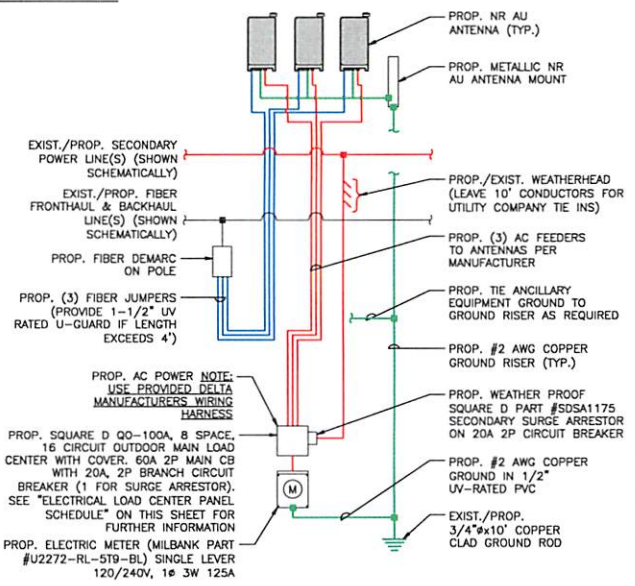
5 ANTENNA DETAIL  
N.T.S.

NOTE:  
REFER TO RFDS FOR REQUIRED AZIMUTHS

SQUARE D QO-100A, 8-SPACE, 16-CIRCUIT OUTDOOR MAIN LOAD CENTER, SINGLE PHASE IN 3R ENCLOSURE

CKT#	1	2	3	4	5	6	7	8
DESCRIPTION	NR AU ANTENNAS	BLANK	BLANK	BLANK	BLANK	BLANK	BLANK	SURGE ARRESTOR
AMP	20	-	-	-	-	-	-	20

3 ELECTRICAL LOAD  
SCALE: N.T.S.



ONE-LINE DIAGRAM NOTES:  
1. PROVIDE WEATHER TIGHT SEAL CONNECTORS ON ALL CONNECTIONS EACH SIDE OF ENCLOSURE HOUSING.  
2. COORDINATE ANY FURTHER MISCELLANEOUS WIRING AND CONDUIT REQUIREMENTS WITH VERIZON WIRELESS AND ELECTRIC.

LEGEND	
BLUE	= FIBER BUNDLE/JUMBER
RED	= AC POWER
GREEN	= GROUND

6 GENERAL WIRING DIAGRAM  
N.T.S.

LEASE EXHIBIT  
(NOT FOR CONSTRUCTION)

PREPARED BY:  
**NEXIUS**  
TRANSFORM YOUR BUSINESS THROUGH WIRELESS  
A&E OFFICE:  
300 APOLLO DRIVE, SUITE 7  
CHELMSFORD, MA 01824  
1 (978) 923-7965

PRESIDING POWER COMPANY:  
**nationalgrid**

PROFESSIONAL STAMP:

THIS DOCUMENT IS THE DESIGN PROPERTY AND COPYRIGHT OF NEXIUS AND FOR THE EXCLUSIVE USE BY THE TITLE CLIENT. DUPLICATION OR USE WITHOUT THE EXPRESS WRITTEN CONSENT OF THE CREATOR IS STRICTLY PROHIBITED.

DRAWING SCALES ARE INTENDED FOR 11"x17" SIZE PRINTED MEDIA ONLY. ALL OTHER PRINTED SCALES ARE DEEMED "NOT TO SCALE".

SUBMITTALS			
REV	DATE	DESCRIPTION	BY
0	10/21/18	FOR REVIEW	PM
1	01/07/21	REVISED PER NEW STAND.	AA

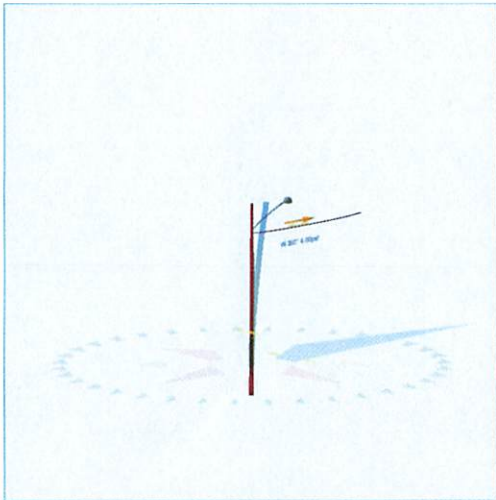
SITE INFO:  
SITE NAME:  
**BOS\_MALDEN\_066\_MA**  
SITE ADDRESS:  
**U/P NO.: 2452  
37-39 WILLARD STREET  
MALDEN, MA 02148**

CHECKED BY:  
**KB/MA**      DATE:  
**01/07/21**

PROJECT NUMBER:  
**20191981075**

SHEET NUMBER:  
**LE-3**

Pole Num:	<b>2452-1 Willard St</b>	Pole Length / Class:	<b>35 / 4</b>	Code:	<b>NESC</b>	Structure Type:	<b>Deadend</b>
Aux Data 1	<b>Unset</b>	Species:	<b>SOUTHERN PINE</b>	NESC Rule:	<b>Rule 250B</b>	Status:	<b>Unguyed</b>
Aux Data 2	<b>Unset</b>	Setting Depth (ft):	<b>5.22</b>	Construction Grade:	<b>C</b>	Pole Strength Factor:	<b>0.85</b>
Aux Data 3	<b>Unset</b>	G/L Circumference (in):	<b>32.00</b>	Loading District:	<b>Heavy</b>	Transverse Wind LF:	<b>1.75</b>
Aux Data 4	<b>Unset</b>	G/L Fiber Stress (psi):	<b>8,000</b>	Ice Thickness (in):	<b>0.50</b>	Wire Tension LF:	<b>1.30</b>
Aux Data 5	<b>Unset</b>	Allowable Stress (psi):	<b>6,800</b>	Wind Speed (mph):	<b>39.53</b>	Vertical LF:	<b>1.90</b>
Aux Data 6	<b>Unset</b>	Fiber Stress Ht. Reduc:	<b>No</b>	Wind Pressure (psf):	<b>4.00</b>		
Latitude:	<b>0</b>	Longitude:	<b>0</b>	Elevation:	<b>0M</b>		



Pole Capacity Utilization (%)	Height (ft)	Wind Angle (deg)
Maximum	<b>12.4</b>	0.0
Groundline	<b>12.4</b>	0.0
Vertical	<b>3.4</b>	14.9

Pole Moments (ft-lb)	Load Angle (deg)	Wind Angle (deg)
Max Cap Util	<b>7,133</b>	0.0
Groundline	<b>7,133</b>	0.0
GL Allowable	<b>58,793</b>	

Groundline Load Summary - Reporting Angle Mode: Load - Reporting Angle: 0.0°										
	Shear Load* (lbs)	Applied Load (%)	Bending Moment (ft-lb)	Applied Moment (%)	Pole Capacity (%)	Bending Stress (+/- psi)	Vertical Load (lbs)	Vertical Stress (psi)	Total Stress (psi)	Pole Capacity (%)
Powers	138	44.8	<b>3,388</b>	47.5	<b>5.8</b>	<b>391</b>	35	0	<b>392</b>	<b>5.8</b>
Pole	147	47.5	<b>2,279</b>	32.0	<b>3.9</b>	<b>263</b>	1,337	16	<b>280</b>	<b>4.1</b>
Streetlights	24	7.7	<b>1,466</b>	20.6	<b>2.5</b>	<b>169</b>	142	2	<b>171</b>	<b>2.5</b>
Insulators	0	0.0	<b>0</b>	0.0	<b>0.0</b>	<b>0</b>	10	0	<b>0</b>	<b>0.0</b>
Pole Load	309	100.0	<b>7,133</b>	100.0	<b>12.1</b>	<b>824</b>	1,523	19	<b>843</b>	<b>12.4</b>
Pole Reserve Capacity			<b>51,660</b>		<b>87.9</b>	<b>5,976</b>			<b>5,957</b>	<b>87.6</b>

Load Summary by Owner - Reporting Angle Mode: Load - Reporting Angle: 0.0°										
	Shear Load* (lbs)	Applied Load (%)	Bending Moment (ft-lb)	Applied Moment (%)	Pole Capacity (%)	Bending Stress (+/- psi)	Vertical Load (lbs)	Vertical Stress (psi)	Total Stress (psi)	Pole Capacity (%)
NGrid	138	44.8	3,388	47.5	5.8	391	35	0	392	5.8
Pole	147	47.5	2,279	32.0	3.9	263	1,337	16	280	4.1
Municipal	24	7.7	1,466	20.6	2.5	169	142	2	171	2.5
<Undefined>	0	0.0	0	0.0	0.0	0	10	0	0	0.0
<b>Totals:</b>	<b>309</b>	<b>100.0</b>	<b>7,133</b>	<b>100.0</b>	<b>12.1</b>	<b>824</b>	<b>1,523</b>	<b>19</b>	<b>843</b>	<b>12.4</b>

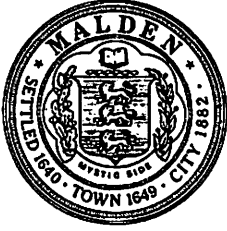
**Detailed Load Components:**

Power															
	Owner	Height (ft)	Horiz. Offset (in)	Cable Diameter (in)	Sag at Max Temp (ft)	Cable Weight (lbs/ft)	Lead/Span Length (ft)	Span Angle (deg)	Wire Length (ft)	Tension (lbs)	Tension Moment* (ft-lb)	Offset Moment* (ft-lb)	Wind Moment* (ft-lb)	Moment at GL* (ft-lb)	
Secondary	TRIPLEX 1/0 10-5	NGrid	24.31	6.16	1.0300	0.27	0.399	27.0	0.0	27.0	107	3,370	18	0	3,388
<b>Totals:</b>											<b>3,370</b>	<b>18</b>	<b>0</b>	<b>3,388</b>	

Streetlight														
	Owner	Height (ft)	Horiz. Offset (in)	Offset Angle (deg)	Rotate Angle (deg)	Unit Weight (lbs)	Unit Height (in)	Unit Depth (in)	Unit Diameter (in)	Unit Length (in)	Offset Moment* (ft-lb)	Wind Moment* (ft-lb)	Moment at GL* (ft-lb)	
General	Streetlight - 8 ft. Arm	Municipal	25.13	3.62	0.0	0.0	75.00	48.00	20.00	3.00	96.00	869	597	1,466
<b>Totals:</b>											<b>869</b>	<b>597</b>	<b>1,466</b>	

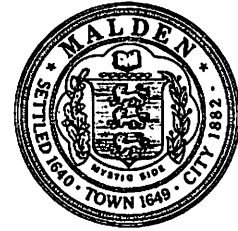
Insulator													
	Owner	Height (ft)	Horiz. Offset (in)	Offset Angle (deg)	Rotate Angle (deg)	Unit Weight (lbs)	Unit Diameter (in)	Unit Length (in)	Offset Moment* (ft-lb)	Wind Moment* (ft-lb)	Moment at GL* (ft-lb)		
Bolt	Single Bolt	24.31	0.00	0.0	0.0	5.00	3.00	0.10	0	0	0		
<b>Totals:</b>										<b>0</b>	<b>0</b>	<b>0</b>	

Pole Buckling													
Buckling Constant	Buckling Column Height* (ft)	Buckling Section Height (% Buckling Col. Hgt.)	Buckling Section Diameter (in)	Minimum Buckling Diameter at GL (in)	Diameter at Tip (in)	Diameter at GL (in)	Modulus of Elasticity (psi)	Pole Density (pcf)	Ice Density (pcf)	Pole Tip Height (ft)	Buckling Load Capacity at Height (lbs)	Buckling Load Applied at Height (lbs)	Buckling Load Factor of Safety
2.00	14.88	32.58	9.62	4.39	6.69	10.19	1.60e+6	60.00	57.00	29.78	44,192	447.99	29.41



# City of Malden

## Massachusetts



Gregory Lucey, City Clerk  
[glucey@cityofmalden.org](mailto:glucey@cityofmalden.org)  
[www.cityofmalden.org](http://www.cityofmalden.org)

City Clerk's Office  
215 Pleasant Street 2<sup>nd</sup> Floor  
Malden, Massachusetts 02148

Phone 781-397-7116

## MALDEN CITY COUNCIL NOTICE OF PUBLIC HEARING

*In accordance with the requirements of Chapter 166 of the MA General Laws, you are hereby notified that the Malden City Council will hold a public hearing at 7:05 P.M. on Tuesday, March 29, 2022, at 215 Pleasant Street, City Council Chambers – Room #106 on petition from Cellco Partnership d/b/a Verizon, 118 Flanders Road, Westborough, MA.*

Cellco Partnership d/b/a Verizon – To collocate small wireless facilities (also referred to as “small cells” on existing wooden utility poles located within the public right of way at the following location:

1. 37-39 Wilard Street

Petition and plans are available for public review in the City Clerk's Office, 2<sup>nd</sup> Floor, 215 Pleasant Street, Malden, MA.

If you would like to request a reasonable accommodation, please contact Maria Luise, ADA Compliance Coordinator at [mluise@cityofmalden.org](mailto:mluise@cityofmalden.org) or 781-397-7000, Ext 2005.

*By: Gregory Lucey, City Clerk*